

Display Products

Ideas Book



Display Products

Pavement Signs

2-10

Chalk Boards

10-11

Post and Panel System

12-13

Flag and Banner Display

14-21

Snap Frames and Poster Boxes

22-29

Light Boxes

30-31

Presentation and Brochure Holders

32-45

Digital Display

46-47

Exhibition Display

48-53

Crowd Control Barrier

54-55



Swinger Range

Optional clip-on headers for tactical promotions

D-Flex anti-shock panel hangers

Soft rounded stylings contributes to the signs high health & safety ratings

The magnetically closed polycarbonate poster wallet is easy to update, secure and virtually waterproof

Choice of permanent graphic or inter-changeable poster panel

Solid black recycled PVC or water-fillable through coloured polyethylene base

New anti-shock D-Flex panel hangers have dramatically improved the life of the sign and further distances Swinger from competitor offerings anywhere in the world



The Swinger range is Ireland's market leading product... But why?

- It is beautifully designed and engineered
- It is stable and safe but at the same time easy to move in and out of the store
- It flat packs for distribution but has the simplest 'no tools' assembly method

Display Products

Page 2

Please Find Pricing On

Page 148 Of Creative Guide

Pavement Signs

Eco Swinger

- The smallest and cheapest Swinger with a 430 x 625mm display panel for permanent messaging
- Recycled black PVC base offers excellent stability
- Gloss white panel for vinyl, digital or screen printed graphics
- 32mm round steel tube frame, polyester power coated
- Flat packed, assembles in seconds without tools
- Individually boxed with instructions

Frame Colour	Display Area	O/A Dimensions
White	430mm x 625mm	534mm x 811mm x 490mm
Black	430mm x 625mm	534mm x 811mm x 490mm

Volume Purchase Only



Swinger 2000 Panel

- Permanent message sign with 500 x 700mm gloss white panel for vinyl, digital or screen printed graphics
- Recycled black PVC base offers excellent stability
- 50 x 25mm flat sided oval steel tube fram, polyester powder coated
- Flat packed, assembles in seconds without tools
- All models individually boxed with instructions

Frame Colour	Display Area	O/A Dimensions
White	500mm x 750mm	600mm x 940mm x 520mm
Black	500mm x 750mm	600mm x 940mm x 520mm



Swinger 2000 Poster

- Double sided A2 poster sign
- Header area on panel for permanent message
- Magnetic edged polycarbonate poster wallet provides excellent weather resistance and durability
- Recycled black PVC base ensures excellent stability
- 50 x 25mm flat sided oval steel tube frame, polyester powder coated
- Flat packed, assembles in seconds without tools

Frame/Panel Colour	Poster Size	O/A Dimensions
White/White	A2	600 mm x 940 mm x 520 mm
Black/Black	A2	600 mm x 940 mm x 520 mm



Please Find Pricing On

Page 149 Of Creative Guide

Display Products

Page 3

Pavement Signs

Swinger 3000 Panel

- Gloss white panel 588 x 917mm for vinyl, digital or screen printed graphics
- Rounded styling and low centre of gravity minimise health and safety concerns
- Water-fillable base with in-built wheels allows easy positioning
- 50 x 25mm flat sided oval tube frame
- Flat packed, assembles in seconds without tools
- Panel Colours white / white, white / black

Frame Colour	Display Area	O/A Dimensions
White	588mm x 917mm	688mm x 1119mm x 600mm
Black	588mm x 917mm	688mm x 1119mm x 600mm



Swinger 3000 Poster

- Double sided 20" x 30" poster sign
- Header area on panel for permanent messages
- Magnetic edged polycarbonate poster wallet provides excellent weather resistance and durability
- Water fillable black base with in-built wheels
- Flat packed, assembles in seconds without tools
- Panel Colours white / white, white / black

Frame/Panel Colour	Poster Size	O/A Dimensions
White/White	508mm x 762mm	688mm x 1119mm x 600mm
Black/Black	508mm x 762mm	688mm x 1119mm x 600mm



Swinger 4000 Poster

- Large format (A1) poster display solution
- New – Stock silver frame and panel option
- 50 x 25mm flat sided oval steel tube frame
- Water fillable black base with in-built wheels
- Magnetic edged polycarbonate poster wallet provides excellent weather resistance and durability
- Header area on panel for permanent message
- Flat packed, assembles in seconds without tools
- Panel Colours black / black, silver / silver

Frame/Panel Colour	Poster Size	O/A Dimensions
Black/Black	A1	774 mm x 1191 mm x 600 mm



Tactical Header

- Tactical header – ideal for highlighting short term promotional messages
- Additional advertising site for minimal cost
- Clips to the top of the Swinger 2000, 3000, 4000 pavement signs
- 1mm rigid gloss white PVC is ideal for vinyl graphics, digital or screen printing

Accessories
Tactical Header Panel
Panel Clip
Tactical Header Clip



Display Products

Please Find Pricing On

Pavement Signs

The 'Eco-nomical' and 'Eco-friendly' high performance sign

For pavement, roadside and forecourt promotion. The combination of low centre of gravity and special grade aluminium alloy 'foil' panel makes Ecoflex the most wind resistant pavement sign available.



Powder coated gloss white panel is ideal for vinyl, digital or screen printed graphics

eco flex bent
Tested in winds over 70mph!

Rounded corners and smooth powder coated edge minimises health and safety concerns

Large display area for maximum visual impact

Carry handle

Rugged recycled PVC base for excellent stability and performance

Eco Flex fixings

Single nylon fixing. No tools required



Design your own panel for the eco flex

Panel/Base Colour	Display Area	O/A Dimensions
White/Black	460 mm x 783 mm	523 mm x 870 mm x 490 mm

Please Find Pricing On

Display Products

Pavement Signs

A-Master

- Front-loading 'snap open, snap shut' poster frame A-Board
- 32mm profile snapframe with anti glare PVC poster cover each side
- Galvanised steel back panels for weight and stability*
- Hinged locking arms
- Stock colour: Silver anodised aluminium frame with chrome round corners for safety

*Beware of lightweight plastic alternatives

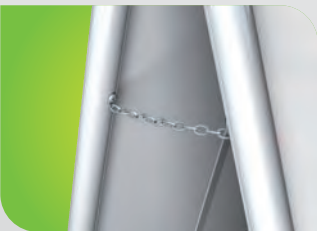
Poster Size	Display Area	O/A Dimensions
A1	460mm x 783mm	637mm x 1100mm x 800mm
508mm x 762mm	486mm x 740mm	551mm x 910mm x 700mm



A-Board

- A-Board with 500 x 700mm double sided display area
- 32mm dia. steel tube frame, white powder coated
- Fixing-free gloss white panel surface ideal for printed vinyl graphics
- Ready for use

Display Area	O/A Dimensions
500 mm x 700 mm	564 mm x 860 mm x 700 mm



Display Products

Page 6

Please Find Pricing On

Page 152 Of Creative Guide

Pavement Signs



Sign+Digital

Attractive poster A-Board boosted by semi-circular header

- Magnetic-edged antiglare poster cover with colour-matched border
- Easy poster access via hidden release hole at the back of each panel
- Side locking arms
- Range of stock colours and sizes
- Quick and easy poster change
- Side locking arms

Colour	Poster Size	Display Area	O/A Dimensions
White	508mm x 762mm	506mm x 760mm	600mm x 1165mm x 680mm
Black	508mm x 762mm	486mm x 740mm	551mm x 910mm x 700mm
White	A1	592mm x 838mm	680mm x 1310mm x 770mm
Black	A1	592mm x 838mm	680mm x 1310mm x 770mm



Please Find Pricing On

Page 153 Of Creative Guide

Display Products

Page 7

Forecourt Signs

SENTINEL The Ultimate Postersign

External forecourt poster signage is a powerful advertising tool. With 70% of purchase decisions made in-store driving footfall into the store is obviously key for retailers and brand owners alike, and nothing does that better than targeted high impact poster advertising outside the store. The use of strong poster graphics displayed in a well designed sign will ensure that first impressions count for success.

Frame/Base Colour	Poster Size	Display Area	O/A Dimensions
Silver/Black	762 mm x 1016 mm	742 mm x 996 mm	935 mm x 1429 mm x 703 mm
Silver/Black	1016 mm x 1524 mm	996 mm x 1504 mm	1171 mm x 1942 mm x 894 mm
Silver/Black	A0	820 mm x 1169 mm	979 mm x 1600 mm x 703 mm

Trolley For Sentinel

Colour	O/A Dimensions
Silver	225 mm x 1220 mm x 225 mm



Sentinel For Ultimate...
Styling, Performance
Durability, Value for money



Display Products

Please Find Pricing On

Pavement Signs

Top Quality Pavement Sign At A Great Price

Attractive styling and excellent quality

Enhanced rigidity and stability

Snap open, snap shut frame for quick and easy poster change

Silver anodised frame with rounded corners

Anti glare PVC poster cover

Large capacity water- fillable base with in-built wheels
and carry handle

Poster Size	Display Area	O/A Dimensions
A1	576mm x 821mm	800mm x 1193mm x 505mm
762mm x 1016mm	744mm x 997mm	960mm x 1386mm x 610mm
A0	823mm x 1173mm	960mm x 1559mm x 610mm



Water Fillable Base



In-Built Wheel



Please Find Pricing On

Display Products

Chalk Boards

Premier Chalk A-Board

- Superb quality A-board ideal for pubs, restaurants and cafes
- 539 x 810mm display area
- Exterior grade MDF panels, rubber hinges, self levelling feet
- Suitable for use with chalk or liquid chalk pens
- Stock colour: silver frame black panel



Colour	Size	Display Area	O/A Dimensions
Black	Small (3 mm HPL)	542mm x 813mm	676mm x 909mm x 666mm
Black	Large (4 mm HPL)	720mm x 1069mm	844mm x 1172mm x 780mm

Ecoflex HPL

All the features of Ecoflex but with a chalkboard display

- 3mm double-sided HPL panel
- Delivered plain black chalk board, you add the print
- Suitable for use with soft chalk or liquid chalk pens
- Recycled and recyclable PVC base

Panel/Base Colour	Display Area	O/A Dimensions
White/Black	460mm x 783mm	523mm x 870mm x 490mm

Sandwich Chalk Board Mahogany

- Blackboard writeable on two sides
- Hard Wooden Frame – Triple UV-resistant lacquered
- All weather resistant

Size
750 mm x 1350 mm

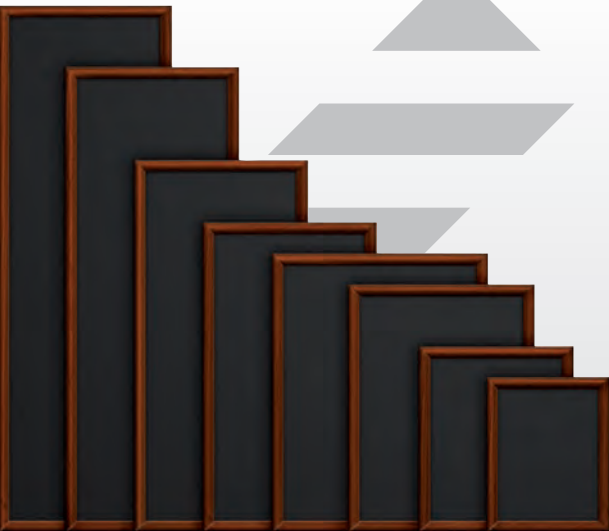


Hardwood Framed Wall Boards: Dark Brown

- Lacquered hardwood frame in dark brown finish
- 38 x 23mm rounded section
- Individual carton packed with pair of 'O' screws

Wall Board Dark Brown
600 mm x 800 mm
560 mm x 1200 mm
560 mm x 1500 mm

* Freestanding Easel available



Chalk Markers

- Top quality Securit chalk markers for indoor and short term outdoor use
- 2-6mm (small) available in 8 pack assorted colours
- 7-15mm (large) available in 8 pack assorted colours
- Erase with damp cloth
- Any staining following prolonged use can be removed using conventional household cleaners

Illumigraph Chalk Markers Pack of 8
2 mm - 6 mm
7 mm - 15 mm



Easel Dark Brown

- Hardwood easels with dark brown finish
- Suitable for 600 x 800 or 700 x 900mm matching wall boards
- Safety catch to prevent unplanned closing

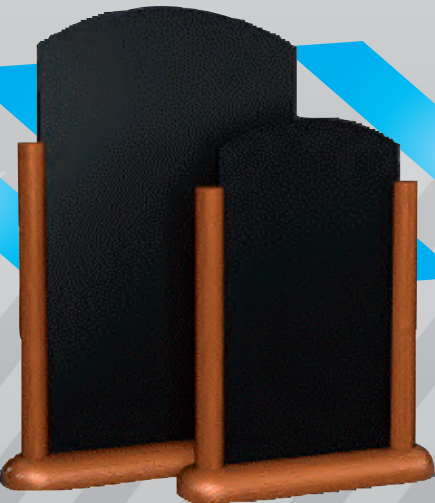
Universal Easel Dark Brown
1650 mm



Counter / Table Top Chalkboard Dark Brown 'Elegant'

- Slide-in 2mm double-sided chalk panels, square or round top
- Solid hardwood base, dark brown finish
- 2 standard make to order sizes

Table Top Chalkboard Dark Brown
150 mm x 210 mm
210 mm x 300 mm



Post & Panel Systems

Finally a post and panel system that offers a high quality construction and a great price.

Sign + Digital Materials Ltd have introduced a high quality Post and Panel System from Delta Sign Systems in Holland
In reponse to demands from sign makers all over Ireland.

We searched for a system that would offer high quality construction, aesthetic appeal a wide choice of profiles all at a competitive price .Take a look at the range of signs we have and give us a call for advice or a quick quotation, our team is equipped with Tailor made software and can produce quotes quickly and we are always on hand to offer advice on this specialist product.

Call us and you will be amazed how easy it is to sell a post and panel sign system.



Display Products

Page 12

Please Find Pricing On

Page 158 Of Creative Guide

Post & Panel Systems

Place your order
Let us take the work out of producing a quote

Before you calculate your project fax us a drawing and give us a call. Our team is equipped with tailor-made software and can produce quotes quickly. Nothing is too much trouble.

Quality products and components
All our post and panel systems are made from the highest quality aluminium extrusions with metal end caps and components. All components are kept to a minimum, resulting in a high quality, long lasting finish that is easy to assemble.

Easy Construction
All post and panel systems are supplied as a kit. All the extrusions are stocked in 6mtr lengths and cut to size free of charge. All post and panel systems are quick and easy to construct. All the components are modular with easy construction in mind.



A: Rectangle Corner Piece



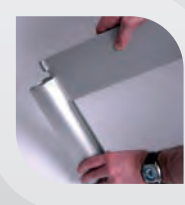
B: Rectangle Corner Piece



A: Round Corner Cap



B: Rectangle Cover Cap



Choose with or without upper beam
a. with upper beam
b. with out upper beam



A: Round Corner Cap



B: Rectangle Cover Cap

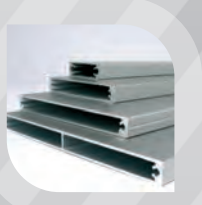


Choose a profile
a.70mm round
a.with corner piece
a.with cover cap

b.50mm x 100mm rectangular
b.with corner piece
b. with cover cap
c.textplates
e.base plates



E: Base Plates



C:



Choose your panel system
a.with text plates
b.with own panel

Ordering a post and panel system is simple.

Please Find Pricing On

Page 159 Of Creative Guide

Display Products

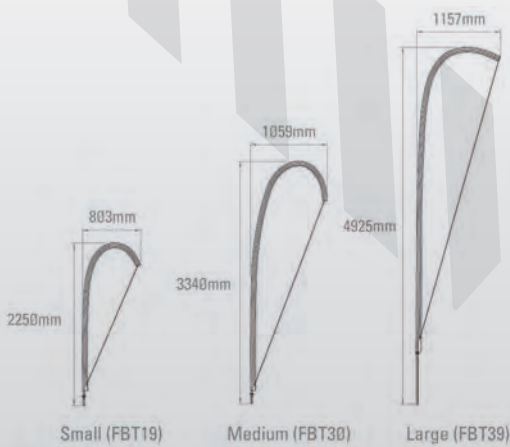
Page 13

Flying Banners

Teardrop

- Amazing advertising tool
- Available in 3 sizes
- Poles made from high performance carbon fibre
- Units come with carry case
- Units can be mounted with accessories on page 161
- Flag templates available for own flag production

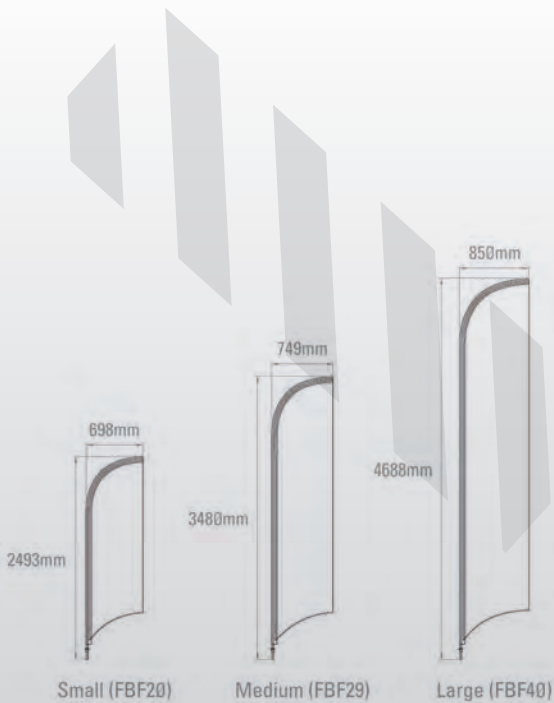
Teardrop
FBT19
FBT30
FBT39



Feather banner

- Amazing advertising tool
- Available in 3 sizes
- Poles made from high performance carbon fibre
- Units come with carry case
- Units can be mounted with accessories on page 161
- Flag templates available for own flag production

Feather
FBF20
FBF29
FBF40



The unit does not come with a printed banner and Sign and Digital do not provide a printing service, however we would be glad to recommend companies who can professionally print flag. For optimum vibrancy we recommend the flags be printed using dye sublimation process .Flag templates available for your own flag production.



The unit does not come with a printed banner and Sign and Digital do not provide a printing service, however we would be glad to recommend companies who can professionally print flag. For optimum vibrancy we recommend the flags be printed using dye sublimation process .Flag templates available for your own flag production.

Display Products

Please Find Pricing On

Accessories Flying Banners

Cross Base and water Bag

- Ideal for use on hard standing ground ,indoors or out
- Holes at end of feet allow pegging into soft ground ,pegs not included
- Powder coated steel cross base, with ball bearing central pivot for friction –free flag rotation
- Optional water filled water bag for added stability

Cross Base & Water Bag
Base
Water Bag



Ground Spike

- Chrome plated steel ground spike
- Bearing spindle for smooth flag rotation.



Please Find Pricing On

Display Products

Flag Poles

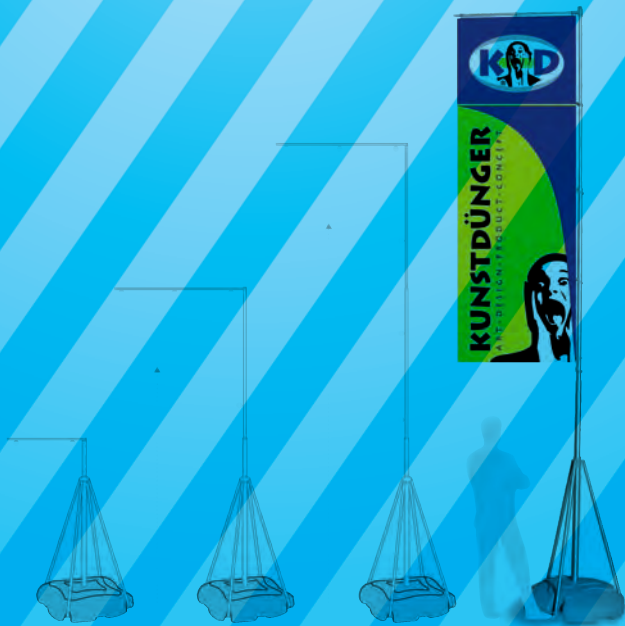
Giant Pole

Giantpole's are mobile, stable and robust, standing 5.4m you will attract attention for sure, whether sporting or cultural events, fairs, open houses or sales promotions, the mobile Giantpole will catch everybody's eye. Pole and bars are made of anodized aluminium. The plastic base can be filled with water or sand and when filled the Giantpole can withstand wind speed up to 50.4km/h.

Set base and pole together in no time. Mount the flag and extend the telescopic flagstaff, that's it.

Plastic and anodized aluminium, incl. snap rings for flag telescopic

Code	O/A Dimensions
Giant Pole	1150mm x 5400mm x 800mm



Display Products

Café Banner Stands

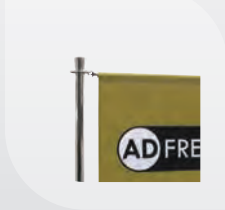
SD Cafe Barrier

The SD Cafe Banner is the ultimate in quality and design. Designed using 304 grade polished stainless steel throughout, 50mm diameter stanchions and 25mm cross rails. Excellent long life spec for outdoor use will not get chipped or easily scratched. Overall height less than 1000mm complies with all local authority design requirements. Quick and easy to assemble – simple pictorial and Allen keys provided. Designed and specified for performance and longevity.

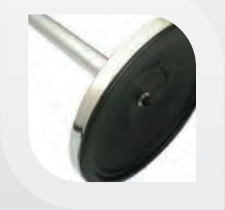
Standard Barrier kit
2x uprights, 2 x 1200mm crossbar
Add on crossbars: 1200mm, 1500mm, 1800mm

Cafe Banner
Base
Pole
Sliding Ring
Eye Plate
Cross Rail 1200 mm*
Cross Rail 1500 mm*
Cross Rail 1800 mm*

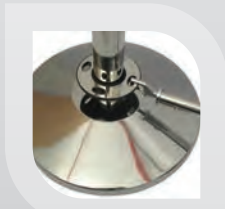
* Refers to distance between centres of poles



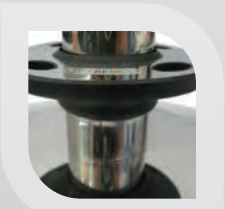
Upper cross rail with easy clip in attachments, quick release operation



14.4kg stanchions with 360mm diameter bases for optimal stability.



Rigid lower cross rails audible tap and resistance for the visually impaired.



Unique smooth glide sliding ring, keeps banner flat, and eliminates rattling.



Chrome plated eye plat for wall mounting.

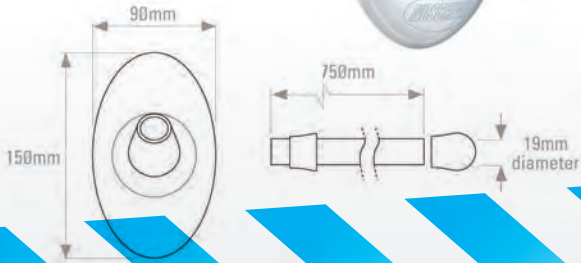


Please Find Pricing On

No Screwz

The suction flag bracket that opens up an array of new promotional opportunities. Perfect for windows but equally effective on sign facias, vehicles, retail fixtures, metal cladding, petrol pumps, etc... in fact any smooth, flat, clean surface. – No tapes, tools or screws!

- Amazingly strong vacuum suction – works on any smooth, flat clean surface
- Secure and tamper proof
- Push-fit flag pole
- Suitable for external use
- Installed or removed in seconds
- Custom made flags or banners can be produced in a wide choice of sizes, shapes and materials.



Standard Flag kit

.Tapered socket allows excellent pole grip and prevents loss of flag in windy conditions
.Suitable for screw fixing to the wall
.kit includes ,PVC pole (750mm length,19mm diameter) ,finial and collar.



Please Find Pricing On

Display Products

Banner Frame

Monster Frame

Monsterframe for giant prints: The product for your BIG prints in the out-of-home marketing sphere. User-friendly in- and outdoor mounting system for advertising banners made of pvc or net vinyl. Smart design and high-grade quality is what monsterframe stands for. All parts are robust, durable, top quality and reusable. The banner mounting is especially clever, the buttons are simply inserted into the profile's notches. Buttons can be replaced at anytime – even after-mounting, the banner can be hung up and taken down by ONE person, with NO demounting and NO tools.



Code	Description
ACL3540WE	fisso clamp box
AGK30GR	elastic expander with hook
MFA110AR	monsterframe corner connector
MFGK06GR	monsterframe elastic rope, 50m
MFP1100AL	monsterframe profil 1100 mm
MFP2100AL	monsterframe profil 2100 mm
MFP25x6500	monsterframe profil 6500mm, 25pcs
MFP3100AL	monsterframe profil 3100 mm
MFP4100AL	monsterframe profil 4100 mm
MFP5100AL	monsterframe profil 5100 mm
MFTP22GR	monsterframe buttons
MFV400AL	monsterframe cross connector
MFVH01AL	1 point wall mounting support
MFVH03AL	3 point wall mounting support

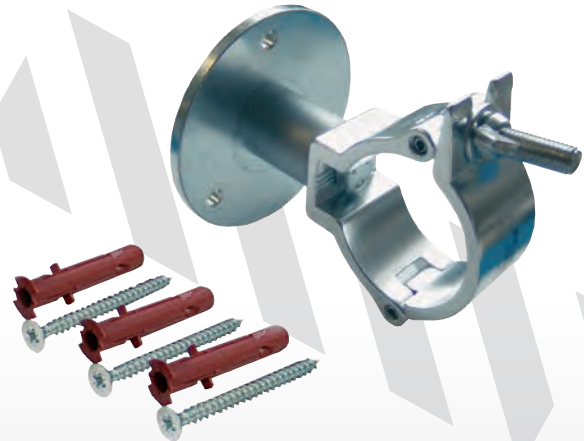
Please contact Sales Team for pricing.



Monsterframe Buttons



1 Point Mounting Support



3 Point Mounting Support



Elastic Expander With Hook



Monsterframe Connection Panel



Monsterframe Corner Connector



Monsterframe Elastic Rope

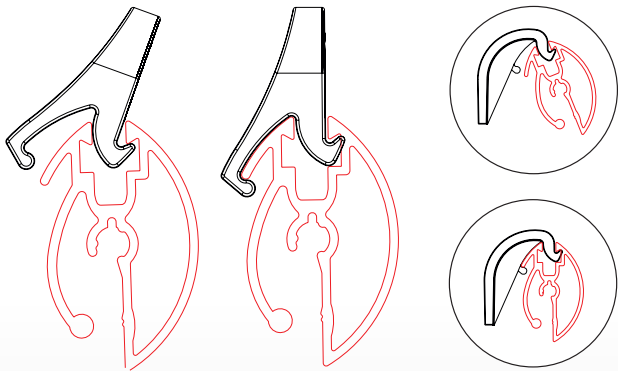
Banner & Flag Products

Bannerblock

The perfect profile to display your digital prints. This silver anodized aluminium extrusion helps clamp the full length of your digital print giving it a high quality feel and finish. The plastic eyelets included for suspension from ceiling can be simply clipped on. The banner block is available in common size lengths as a 2 piece set with eyelets and convenient profile opener.

Code	Size
BBC500	500 mm
BBC700	700 mm
BBC1000	1000 mm
BBC1200	1200 mm
BBC1500	1500 mm
BBC2000	2000 mm

*Price include top and bottom profile



Display Products

Page 20

Please Find Pricing On

Page 166 Of Creative Guide

Banner & Flag Products

Bannerboy Structure

With Bannerboy and Bannerblock you can build your own modular walls. The Bannerboy is telescopic and can extend from 1300mm – 2400mm. Allows double sided presentation, don't forget Bannerboy connector clip to hold profile on bottom end of banner.

Bannerboy Structure	
BABN2400ELG	1300 mm - 2400 mm
Bannerboy Connector Clip to Attach Bottom Profile	
BABBC	1 Piece



Bannerboy Connector Clip for Bottom of Profile



Please Find Pricing On

Page 167 Of Creative Guide

Display Products

Page 21

Snap Frames

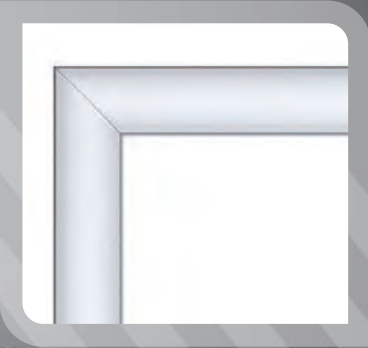
Snap Frames

We are Ireland's leading Snapframe Supplier...
We have probably the biggest range in Ireland at competitive prices combined with top quality and service to make it easy for you.

- Front-loading 'snap open, snap shut' poster frames
- Quick and easy to change posters
- Silver anodised aluminium finish
- Anti-glare poster cover sheets
- Square and round corner options
- Predrilled
- Suitable for outdoor use
- Individually boxed with 4 screws and wall plugs

Poster Size	Display Area	O/A Dimensions	Profile Size
A5	128mm x 190mm	158mm x 220mm	15mm
A4	192mm x 279mm	240mm x 327mm	25mm
A3	279mm x 402mm	327mm x 450mm	25mm
A2	402mm x 576mm	450mm x 624mm	25mm
A1	576mm x 823mm	624mm x 871mm	25mm
A0	810mm x 1157mm	888mm x 1235mm	38mm

Widest range of styles and finishes



Display Products

Page 22

Please Find Pricing On

Page 170 Of Creative Guide

Poster Displays

Snap Frames

Display posters and pictures to excellent effect with our simple to use Snapframe. Clear plastic protects the contents and prevents tampering.

- Front-loading 'snap open, snap shut' poster frame
- Quick and easy to change posters
- Silver Anodised aluminium finish
- Rigid anti-glare PVC poster cover
- Available in poster sizes A4, A3, A2, A1, AO and 20x30 and 30x 40
- Custom sizes made to order

Poster Size	Display Area mm
A5	128 x 190
A4	192 x 279
A3	279 x 402
A2	402 x 576
A1	576 x 823
A0	810 x 1157



Snap Frame Counter Stand

- Snap frame with pair of black rubber feet for freestanding displays on reception desks and counter displays.
- Suitable for frame up to A3 in size.

Snap Frame Counter Stand
A5 - A3 Portrait or A2 Landscape

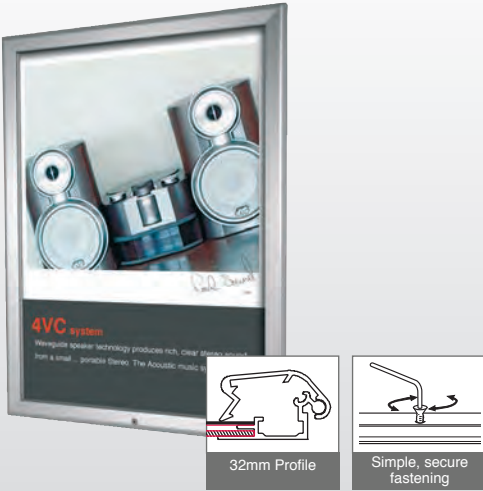


Lockable Snap Frames

Ideal for displaying posters, notices, safety instructions, plans for escape routes. Visible by everyone, yet protected from vandalism and tampering.

- 32mm profile lockable snapframe, high security poster frame
- Sequentially opening sides, last side is lockable
- Stops any security concerns, easy to use with tool provided
- Stock sizes A3, A2, A1

Poster Size	Display Area
A3	277 mm x 400 mm
A2	400 mm x 574 mm
A1	574 mm x 821 mm



Security Frames

Ideal for displaying posters, notices, safety instructions, plans for escape routes. Visible by everyone, yet protected from vandalism and tampering.

- Additional security to prevent poster theft and vandalism
- Frame is virtually impossible to open without opening tool
- With the tool poster change is quick and easy
- 25mm profile stock sizes A4, A3, A2, A1 20 x 30

Poster Size	Display Area
A4	190 mm x 297 mm
A3	277 mm x 400 mm
A2	400 mm x 574 mm
A1	574 mm x 821 mm
508 mm x 762 mm	488 mm x 742 mm



Please Find Pricing On

Page 171 Of Creative Guide

Display Products

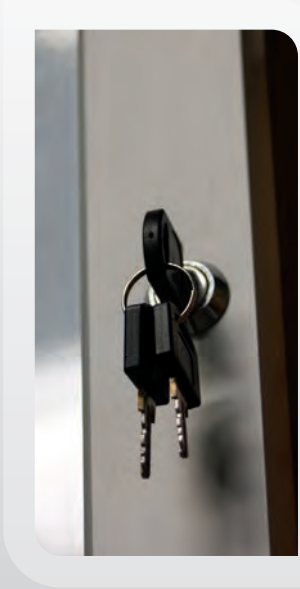
Page 23

Poster Case/Notice Boards

Slimlok 3 Poster Case Without Stavs

- Durable 52mm (wide) x 30mm (deep) aluminium frame with vandal resistant 2mm thick polycarbonate glazing
- Suitable for indoor or out door use in portrait or landscape format
- Range of sizes available , with optional door stays on larger sizes
- Supplied complete with set of keys
- Available in special colours and sizes (minimum order quantity 25 for specials)
- Aluminium frames and polycarbonate covers are fully recyclable.
- No assembly required

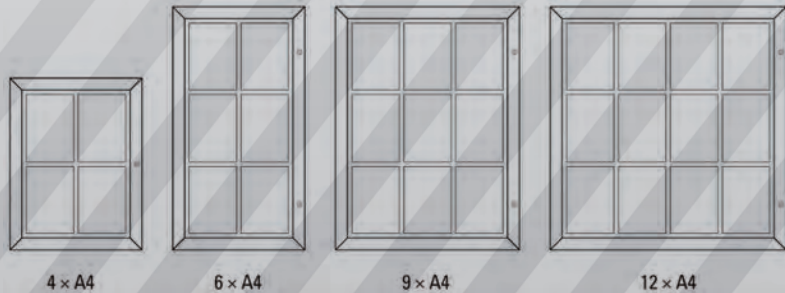
Poster Size	Display Area
A3	273 mm x 396 mm
A2	396 mm x 570 mm
A1	570 mm x 817 mm



Slimlock 3 Notice Board

- All the features of the Slimlock 3 Poster case but with a magnetic /dry wipe backing
- Supplied with set of white magnetic pins
- 3 sizes available 4,6,9 and 12 x A4
- Supplied complete with set of keys
- Aluminium frames and polycarbonate glazing are fully recyclable

Size	O/A Dimensions
4 x A4	585 mm x 759 mm x 32 mm
6 x A4	585 mm x 1076 mm x 32 mm
9 x A4	815 mm x 1076 mm x 32 mm
12 x A4	1045 mm x 1076 mm x 32 mm



Showcases

Slimlock 3 Menu Case

- Durable 52mm (wide) x 30mm (deep) aluminium frame with vandal resistant 1.5mm thick polycarbonate glazing panel.
- All units come with additional header area
- Suitable for outdoor and indoor use.
- Supplied complete with keys
- 4 stock sizes available

Poster Size	Header Size
1 x A4	251 mm x 125 mm
2 x A4 Vertical	251 mm x 125 mm
2 x A4 Horizontal	481 mm x 140 mm
4 x A4	481 mm x 140 mm



Window Display

Window Display Holder

The window display holder is an easy and clean method to position menus and notices on the inside of a window or glass door with the use of four suction cups. Inserts can be changed simply by sliding in or out of the top of the display. The acrylic window display is strong , flexible and resistant to sun rays, minimum space is used and it is ideal solution for your front of house display.

Colour	Poster Size
Black	A4
Black	A3



Illuminated Menu Displays

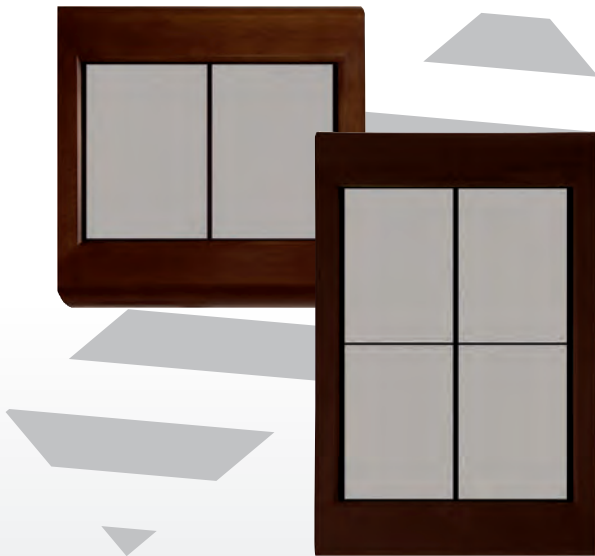
Hardwood

- For wall mounting
- Beautiful solid hardwood casing in choice of 'Teak' and Dark Brown finishes
- Toughened glass glazing
- Gas Strut hinged locking door
- Add to stainless steel pole and base for free-standing (supplied separately)
- CE Approved

Illuminated Menu Display Hardwood

2 x A4

4 x A4



Stainless Steel

- Brushed stainless steel case
- Other details as Hardwood

Illuminated Menu Display Stainless Steel

2 x A4

4 x A4



Pole and Base

- Brushed stainless steel
- 2 part pole and base assembly
- Weighted base
- 3.5m cable, plug, fittings and instructions included

Accessories

Pole 1300 mm

Base 400 mm ø



Display Products

Page 26

Please Find Pricing On

Page 174 Of Creative Guide

Poster and Brochure pole system

Pole and Base

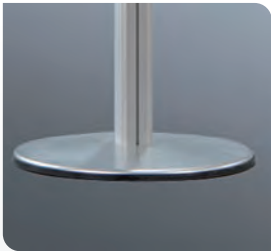
Headline / The Pole system allows for a large variety of configurations, choose from the different accessories such as snapframes ,acrylic pockets, banners and brochure holders.

Pole and base

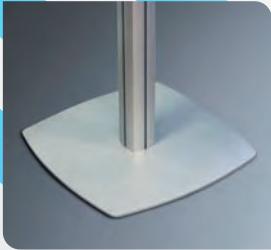
70 x 70 mm silver anodised aluminium poles.

Silver powder coated steel bases

Pole Type	O/A Height
2 - channel	1920 mm
4 - channel	1920 mm



2 Channel Pole



4 Channel Pole

Poster Frame

.snapframes for quick and easy poster change
.30mm profile round corners standard option
.supplied with pre fitted channel to glide into pole.

Poster Frames With Round Corners - Standard Options

Size
A2
A1



Please Find Pricing On

Page 175 Of Creative Guide

Display Products

Page 27

Poster & Brochure Pole System

Brochure Shelves Steel

- Available in 2 sizes 2 x A4 and 1 x A3 angled shelves
- Available in steel or acrylic

Size
460 mm x 310 mm x 40 mm



Slide in Poster Frames

- SILVER ANODISED ALUMINIUM FRAMES WITH OPEN TOP END
- Clear PET poster cover sheets
- Black inner sheet included to block light transmission between posters

Poster Size	O/A Dimensions
A4 Portrait	233 mm x 320 mm
A3 Portrait	320 mm x 443 mm
A2 Portrait	443 mm x 617 mm



Poster & Brochure Pole System

Banner Sets (Poster Hangers)

- Aluminium suspension /locking arms
- Poster hanger rails top and bottom for paper or banner materials up to 1mm thick

Banner Width
400 mm
500 mm
600 mm

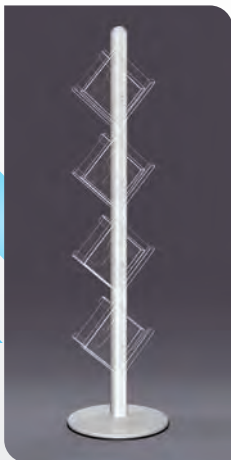
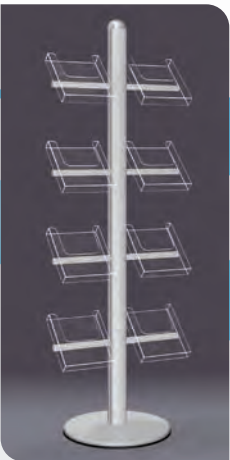


Acrylic Brochure Holders

- Made with clear acrylic
- Options for direct pole mounting or side mounting

Acrylic Brochure Holder with Side-Mounting Arm
Size
A4
A5

Acrylic Brochure Holder - Angled Pole Mounted
Size
A4



Light Boxes

Curved Lightbox

Attractive internal convex lightbox for poster or duration display

- Single sided for wall mounting
- Side profiles snap open to allow easy image change
- Silver anodised aluminium carcass, 3mm opal acrylic panel
- Single or double tube lighting depending on size
- CE certificate supplied with each unit

Poster Size	Display Area
A3	273 mm x 420 mm
A2	395 mm x 594 mm
A1	570 mm x 841 mm



Edgelit XT Lightbox

- Specially treated acrylic panel provides strong, even illumination across the entire surface
- Slim, elegant profile – only 19mm deep
- Front-opening, silver anodised aluminium snapframes (25mm profile) with PET poster covers
- No fragile tubes, bulbs or glass – ideal for busy, high-traffic locations
- CE certificate supplied with each unit
- Other sizes and double-sided units available to order

Poster Size	Display Area
A2	400 mm x 574 mm
A1	574 mm x 821 mm
A0	821 mm x 1169 mm



Illuminated indoor totem

Two sided light-column for posters size 594x1682mm(2 x Din A1) OR 700 X 2000mm(2 x 700 x 1000mm). This is a real eye catcher and looks great in any showroom or reception.

- Double sided free standing poster box for internal use
- Elegant convex design
- Snap open, snap shut side trim top access posters
- Antiglare poster cover permanently fixed
- Certified with CE regulations

Poster Size	O/A Dimensions
600 mm x 1700 mm	650 mm x 1720 mm x 350 mm
700 mm x 1700 mm	750 mm x 1720 mm x 350 mm
800 mm x 1700 mm	850 mm x 1720 mm x 370 mm



Lumo

Lumo for wall mounting is a special flat high quality light panel .The 8mm thick acrylic panel is etched and guarantees ,unlike screen printed glass a perfect and uniform illumination of the whole panel. The high grade Led have a very long lifetime ,the transparent cover sheet is polycarbonate and UV resistant and thanks to the magnetic closing the cover sheet can be removed partly or even completely making the exchange of the poster quick and easy anytime.The black screen printed edge is very discreet at only 30mm .This product is a real eyecatcher.

Size
A4
A3
500 mm x 700 mm
A1
700 mm x 1000 mm

* non-stock item, lead time 10 working days



Presentation & Brochure Holders

Pixquick

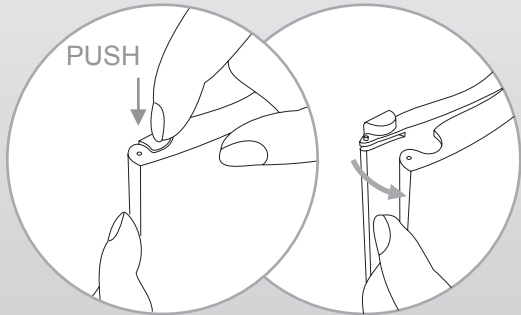
Pixquick's smart design opens new dimensions to presentation techniques. The removable hinged front panel guarantees quick and easy information exchange. The locking mechanism is suitable to both left- and right-handed people. Its special design presents frameless and dust proof information. Shock and UV resistant polycarbonate renders pixquick long-lasting and robust. Die casting ensures consistency of size and highest product quality. Mounting is possible with screws, suction cups or double sided adhesive tape. Pixquick is available in most common sizes and can be used as a counter display or wall sign.

Size	O/A Dimensions
A8 Large*	148 mm x 52 mm
A6 Large*	105 mm x 210 mm
A6*	148 mm x 105 mm
A5	210 mm x 148 mm
A4	210 mm x 297 mm
A3**	297 mm x 420 mm

* Support not included in price, can be ordered separately
** No support

Pixquick Support

Support for A6 and A6 Large
Support for A8 Large

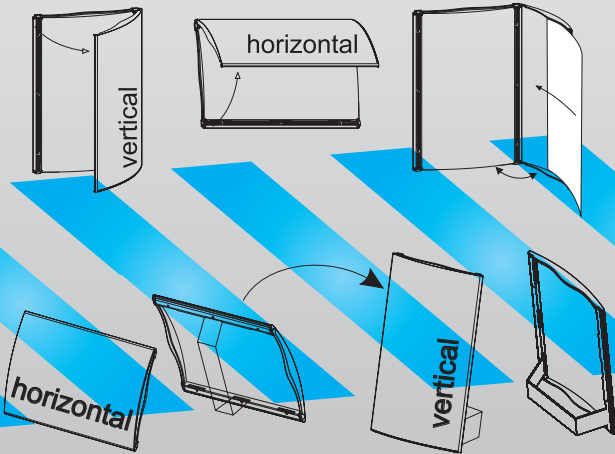


Presentation & Brochure Holders

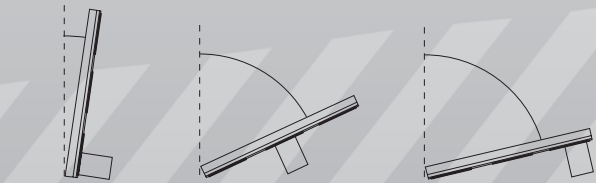
On the Table and on the Wall



Support for A8L made of silver
anodized aluminium



Support for A6 and A6L made of PETG



1. Just rotate for vertical or horizontal positions
2. Different inclinations by changing the support
3. To open expand or remove front panel



Suction cups for supporting pixquick on windows

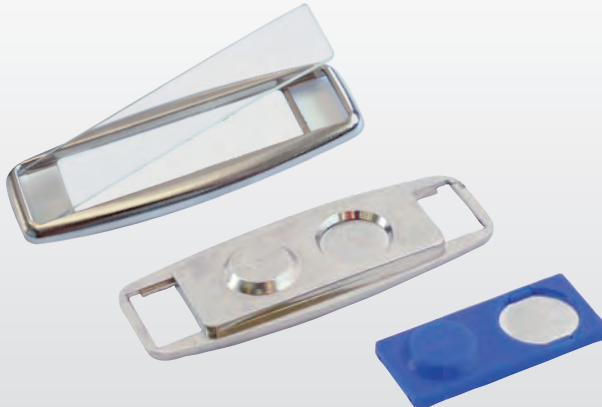
Linfor
Lean design and minimalist qualities are what characterize Linfor, the perfect low budget solution information holder. It is great for mounting onto smooth surfaces like glass. Linfor is a plastic die cast frame with a flexible cover sheet. Transparent double sided tape guarantees accurate dimensions and easy mounting. Linfor is available in most size formats.

Linfor	
LINFORA8TR	A8
LINFORA7TR	A7
LINFORA6TR	A6
LINFORA5TR	A5
LINFORA4TR	A4
LINFORA3TR	A3



Printbadge Small
Trendy badge in high-grade nickel-plated finish with extra strong magnetic fastening

Finish	Size
Nickel Plated	15 mm x 62 mm



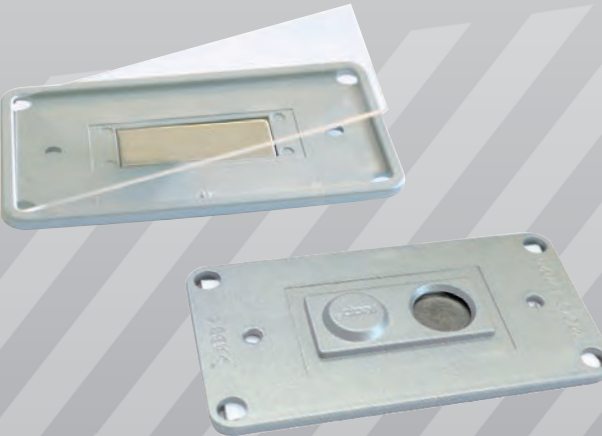
Printbadge Medium
Elegant look in silver metal with safe extra strong magnetic fastening

Finish	Size
Silver	32 mm x 75 mm



Printbadge Large
Appealing format in silver with extra strong magnetic fastening

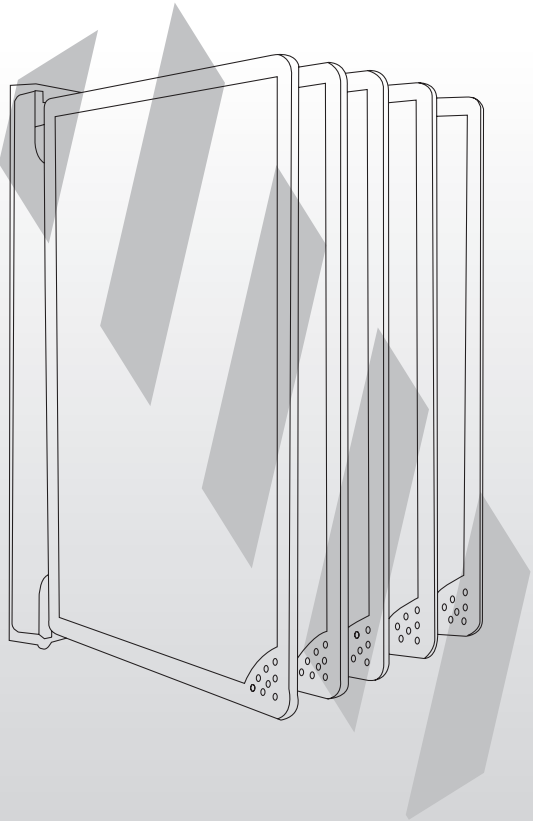
Finish	Size
Silver	37 mm x 75 mm



Presentation & Brochure Holders

Menu
Convenient wall mounted menu or display holder for 10 A4 pages, for menus, price lists ,time tables ,work or security instructions.

Size
5 x A4



Presentation & Brochure Holders



KD clear
Elegant curved transparent acrylic information holder ,the cover is kept firmly in place with magnets and can be asily removed to exchange the information on diplay ,it comes in most common print sizes for vertical or horizontal use.

Code	Size
CLEA6	A6
CLEA5	A5
CLEA4	A4

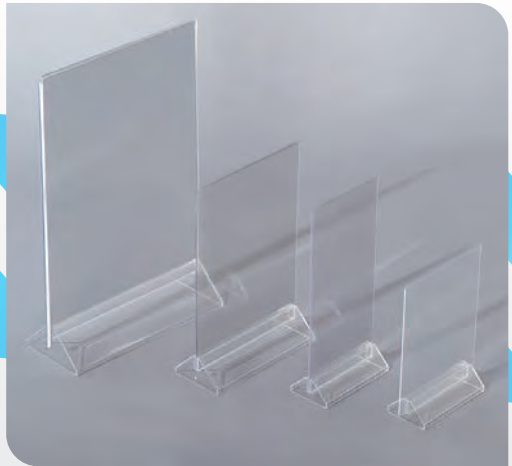


Presentation & Brochure Holders

Menu Holder Double Sided

Double sided freestanding polystyrene poster display

Code	Size
BHV100	100 mm x 210 mm
BHV150	A5
BHV210	A4

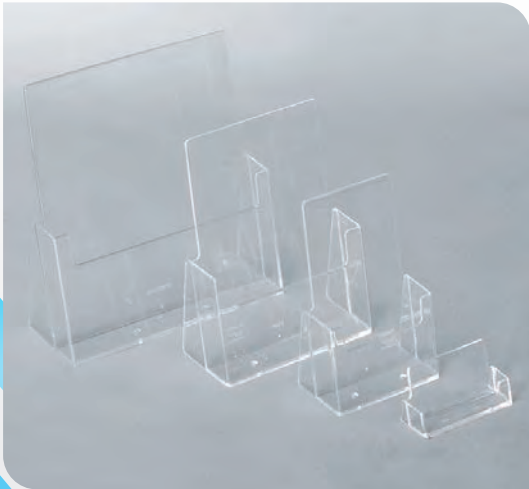


Presentation & Brochure Holders

Counter Stand Brochure Holder

Counter or table brochure holders made from polystyrene, model 6 and 7 with holes for wall mounting

Code	Size
BHBC93	Business Card
BHC110	A6
BHC160	A5
BHC230	A4 Portrait
BHC330	A4 Landscape
BH2C112	2 x A6 Portrait
BH2C155H	2 x A5 Portrait



Menu Holder Single Sided

Single sided freestanding polystyrene poster display

Menu Holder Single Sided Angled

BHAP150	A5
BHAP210	A4



Presentation & Brochure Holders

Wall Mounted/Free Standing Brochure

Working on a low budget then we suggest the transparent polystyrene brochure pockets for direct wall mounting, the single tray displays are available in common Din formats. Available in A6, A5 and A4.

Code	Size
BHW110X	A6
BHW160X	A5
BHW230X	A4



Display Products

Page 40

Please Find Pricing On

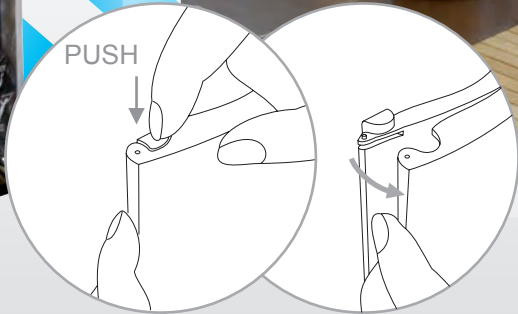
Page 188 Of Creative Guide

Presentation & Brochure Holders

Pirouette

Freely rotating counter display with 3 Pixquick A4 or A6L , comes with a black rotating base. A great solution for any counter or table where you want to display a pricelist, special offer or a menu.

Code	Size
PQPIR3A6L	A6L
PQPIR3A4	A4



Pylon

Quality built double sided counter display with two pixquick A4 or A6, comes with a silver anodized base. The perfect solution for all menu's or price offers looks great.

Code	Size
PQPYA6L	A6L
PQPYA4	A4



Please Find Pricing On

Page 189 Of Creative Guide

Display Products

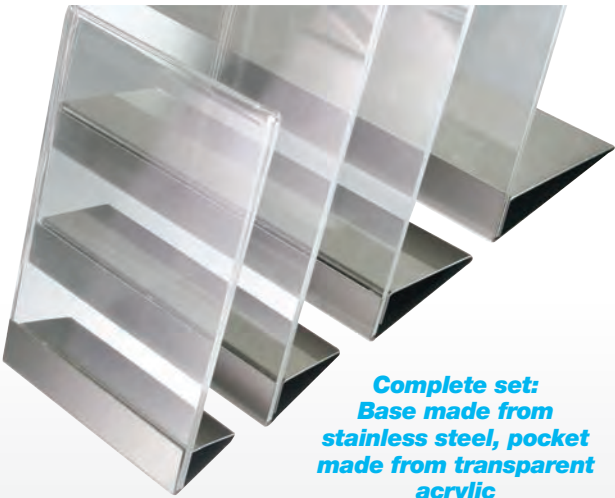
Page 41

Presentation & Brochure Holders

Snaprex

Snaprex is an elegantly designed poster display, it convinces with its smart design and vast diversity for displaying your posters. Simply insert your images or prints into the transparent acrylic pockets, insert the pockets onto the brushed stainless steel bases. The base can be placed either on horizontal or vertical side. The Snaprex will bring a touch of quality to your graphics.

Code	Size
SNRA7	A7
SNRA6	A6
SNRA5	A5
SNRA4	A4
SNRA3	A3



Complete set:
Base made from
stainless steel, pocket
made from transparent
acrylic



Vertical or horizontal,
just turn 90 degrees
around



Convient poster exchange ,insert the poster into acrylic
glass pocket then attach to the base

Presentation & Brochure Holders

Decorative Menuboard

- Stylish and functional internal messaging
- Rounded base offers improved aesthetics and safety
- Stock sizes A4, A3 (landscape or portrait)

Poster Size
A4 Portrait
A4 Landscape
A3 Portrait
A3 Landscape



Telescopic Menuboard

- Attractive and flexible information display
- incorporates an A3 snapframe for quick and easy poster change
- Telescopic option allows flexibility of display height and angle
- Height adjustable between 1000mm and 1450mm

Poster Size
A3 Portrait



Double Leg Classic Menuboard

- Traditional information display post, A3 poster display
- Provided with PVC ant-glare poster cover
- Choice of mitred or rounded corners
- Unit height is 1200mm

Poster Size
A3 Portrait



Decorative Brochure Stand

- A4 brochure display plinth
- Aluminium leg with polycarbonate display shelf
- Moulded Silver plastic base with internal steel plate for stability

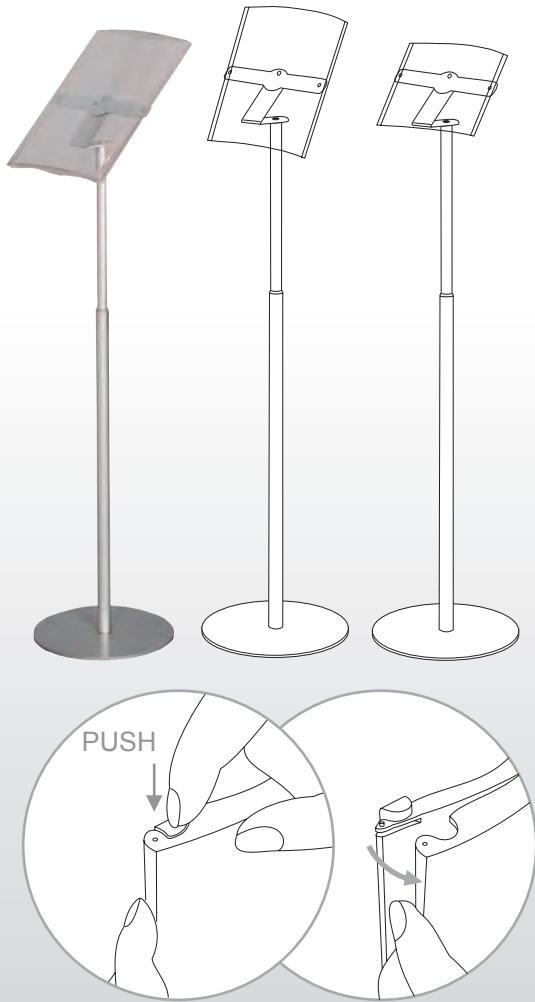
Poster Size
A4 Portrait
A4 Landscape

Presentation & Brochure Holders

Swift

Another great solution from Sign and Digital, the Swift combines pixquick A4 and A5 as a freestanding floor display with telescopic bar and round base. A dust proof and elegant presentation of single sheet information without a visible frame. Simple to exchange anytime by opening or taking away the front cover. The clever design allows rotation from horizontal to vertical. It is freely adjustable in height and format according to your needs.

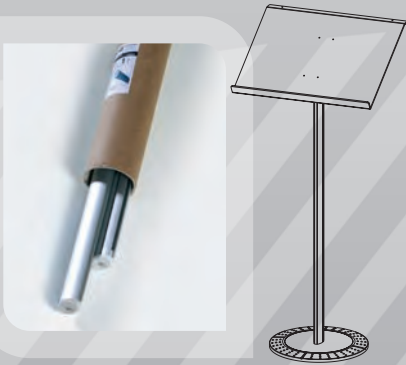
Size
A5
A4



Desk Soistes

The free standing display with its satin acrylic tray is ideal for presentation of menus , catalogues, guest books, flyers and much more, additionally you can expand your image by adding the banner block extrusion.

Desk Soistes
Desk Soistes
Bannerblock



Display Products

Please Find Pricing On

Presentation & Brochure Stands

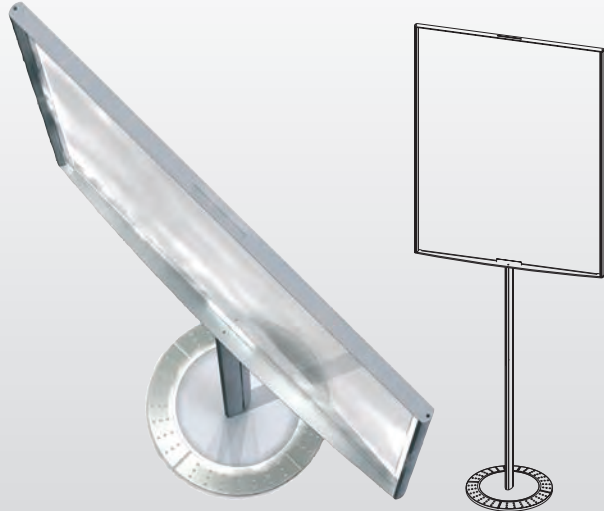
Stopinfo

If you want a really good stable information display with a double sided poster pocket don't look past the stopinfo. Thanks to the magnetic closing system poster exchange is also easy at any time. The base of the Stopinfo is heavy weight which makes this Sign extra solid .Would look great at the entrance of any building. Available in 3 sizes, A3, 700 X 500 AND 1000 X 700.

Size
A3
500 mm x 700 mm
700 mm x 1000 mm

Tray for Stopinfo Pack of 2

Size
A4



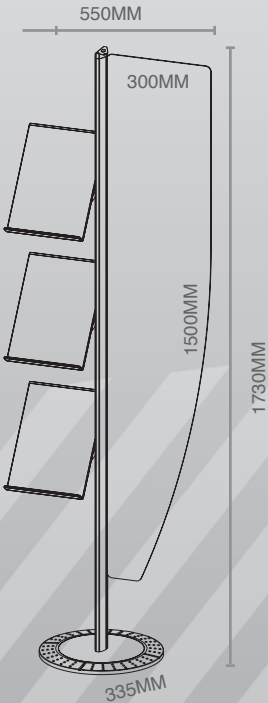
Acrylic trays for 2 A4 sized literature may be purchased separately



Trend

Trend soistes is a beautifully designed free standing display unit with 3 A4 trays made from satin acrylic with a 30mm lip. The trays are adaptable horizontally and can be regulated in height as well. The silver grey coated 3mm thick aluminium composite panel can be customized with a graphic. The panel supports are made from silver plated brass.

Tray Size	Panel Size
A4	300 mm x 1500 mm



Please Find Pricing On

Display Products

Brochure stands with digital displays

Zip Media

Images say more than 1000 words:with the Zip media you are mobile and multi functionally equipped as well. The Zip media is a real eye catcher it comes equipped with 3 shock resistant polycarbonate die cast brochure trays which fold up to a stable rack for both print and audio-visual media. The Zip media comes with a 7" LCD screen protected by a silver anodized casing. At exhibitions, in your showroom you will certainly catch the attention of your customers with your audio visual presentation. At the bottom of the Zip media there is a Pixquick poster frame which allow you to personalise your brochure stand.

Pocket Size

A4

* non-stock item, lead time 10 working days



High image quality and a trendy look

Velo Media

Give your presentation a multi media twist with the Velo media. The velo media is a silver anodized aluminium panel that can be customized with your graphics ,it comes with a handy brochure holder and an 8" digital picture frame

Pocket Size

A4

* non-stock item, lead time 10 working days



Display Products

Page 46

Please Find Pricing On

Page 194 Of Creative Guide

Digital Displays

Images say more than 1000 words

High image quality, super sound, trendy look

ipoint media

Images say more than 1000 words ,with the I-Point media you are offering an audio-visual presentation that will wow your customers. With its elegant looks and the choice between the 12.1" and the 17" screens the IPoint media is a real eye catcher. Load your movies or slideshows on the memory card or your usb stick and way you go, high image quality, super sound and a trendy look. You can customize your IPOINT media with laminated logo's or graphics.

Code	Screen Size
IPM12	12.1 in
IPM17	17 in

* non-stock item, lead time 10 working days



Black powder coated metal base, frame silver anodized aluminium, black aluminium composite panel with lcd screen. A real eye catcher.



On the rear side you will find the interfaces for memory cards or USB sticks and exit of the cable. Memory card not included.

Please Find Pricing On

Page 195 Of Creative Guide

Display Products

Page 47

Roll Ups

SD 1000

Fed up of seeing the standard economy roll ups everywhere you go? Here we have an economy roll up with a difference !.This elegant looking roll up is finished to the highest standards and has the following

Features:

- Snap rail profile on top
- Made from strong durable aluminium
- Two fold out feet
- Easy open padded nylon case
- Image size 850 x 2150
- Overall size 850 x 2250 making it 150mm taller than most Roll Ups.

SD 1000 Roll Up 850mm X 2150mm



SD 850

Standard economy roll up made from strong durable aluminium, finished to the highest standards and has the following features
 .Economically priced
 .snap rail profile on top
 .two fold out feet
 .Easy open padded case
 .image size 850 x 2150



SD4000 Roll Up

At Sign + Digital we appreciate that customers need affordable good quality products, so Sign + Digital is constantly on the lookout for cost effective Signage display solutions. The SD4000 is the perfect example of this with its high end looks and sturdy design manufactured from strong durable aluminium; it has a deep footprint and for extra stability includes adjustable feet for uneven surfaces.

- Top and bottom snap closing profiles allow the graphic to be interchanged
- Image size 850 x 2150
- Overall size 850 x 2250
- Comes with easy open nylon case



Quick Banner Single

- Flexible free-standing banner display
- Banner clips easily into display system
- Banner height 2 meters (fixed height)
- Lightweight carry bag included
- Stock sizes: 800 or 1000mm widths

Quick Banner Single Sided (bag included)

Total Graphic Size
 600 mm x 2000 mm
 800 mm x 2000 mm



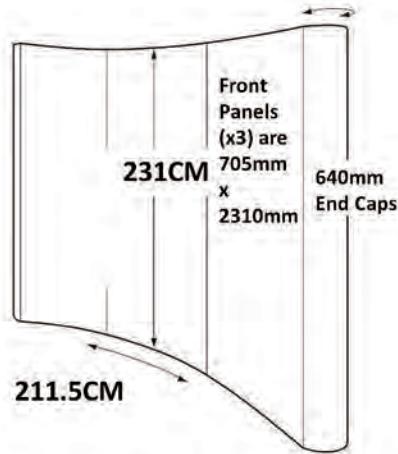
Pop Ups

3 x 3 and 4 x 3 curved fronted POP-UP displays at amazing prices

Kits Include:-

- Silver finish 12mm dia. aluminium collapsible frame with black injection moulded fittings
- Set of snapfit mag bars and roll of 25mm wide mag B tape
- Roll of 12mm wide mag A tape for vertical panel edges
- 2 x 150W clip on spotlights with cable plug
- Semi rigid wheeled trolley/case plus instructions

Size	Center Panel	Side Panel
3 x 3	705 mm x 2310 mm	640 mm x 2310 mm
4 x 3	705 mm x 2310 mm	640 mm x 2310 mm



Hard transport case with attachable wooden counter top



Sturdy aluminium frame



Magnetic tape



2 x 150watt clip on spot lights

Display Products

Please Find Pricing On

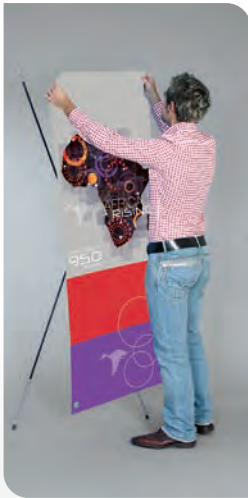
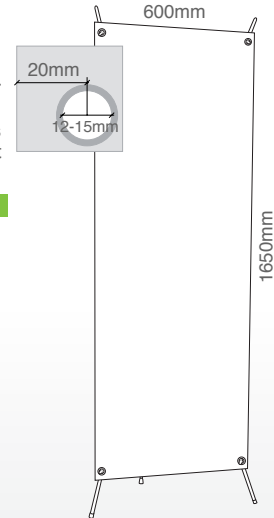
Exhibition Displays

X-IMAGE

X-Image banner display is perfect for short term and mobile use, you can set up the x-image in no time at all, just attach the banner and away you go. The main pillar can be adjusted for height and inclination of banner as required. We will provide you with the transport bag to travel with your x-image.

X-Image

600 mm x 1650 mm



Show Zip

It's Showtime. 3 Brochure pockets made of UV and shock resistant polycarbonate die-cast, unfolding easily to a brochure rack. Mount the telescopic bar to the base and the banner-block support on the bar. The bar is adjustable from 1.3m up to 2.4m, clamp in your banner and hook it on the bar. The pixquick on the front panel you can customise your showzip easily with your own prints.

Code	Pocket Size	Banner Width	O/A Height
SHOWBB700	A4	700 mm	1300 mm x 2400 mm



FixTable

Fixtable acts as both a portable brochure stand and a table. It's a real eye catcher with a silver metallic varnished top with space for 2 Din A4 brochures beneath. Fixtable is the best portable table in the field and is ideal for exhibitions or product launches or as a permanent presentation in your showroom.

Code	Pocket Size	Tabletop Size	O/A Height
FTZ105AA	A4	450 mm x 350 mm	1050 mm



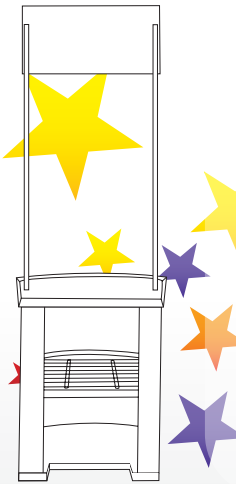
Please Find Pricing On

Display Products

Exhibition Display

StandbyU

StandbyU is the promotional counter for mobile use, easily personalised with print ,robust and stable, mobile and practical. The unit also offers practical storage space and on the counter there is ample space to display catalogues and promotional materials, comes with robust storage bag.

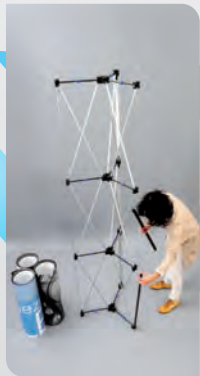


Code	Counter Side Panel Graphic Size	Counter Front Panel Graphic Size	Top Panel Graphic Size
DSTBU	450 mm x 880 mm	850 mm x 880 mm	780 mm x 300 mm

Ima2go Tower

Ima2go tower is a great pop up tower,a real for your presentation, the ima2go tower sets up in no time into a 2235mm tall tower. Banner mounting is quick thanks to the magnetic strips. Another great solution from Sign and Digital.

Code	Panel Quantity	Graphic Size
DIMTOW	3	673mm x 2235mm



Promo Counter

- .convex conter with white top
- .portable flat pack design
- .strong sturdy construction
- .silver anodised aluminium frame with white foam PVC display panels
- .optional carry bag available

O/A Dimensions	Front Graphic Size	Side Graphic Size
1060 mm x 930 mm x 580 mm	980 mm x 878 mm	430 mm x 878 mm



Brochure Stands

Real Zip

A Real and genuine original. Staggered arrangement and the ergonomically curved aluminium side braces guarantee easy access to the printed material. 3 or 4 die-cast polycarbonate brochure pockets with unfold in no time at all into an easy access to the printed material. In the blink of an eye your real zip id customised for any occasion. The clever Pixquick design presents your print, frameless and dust proof.

Code	Pocket Size
PQSWA5	A4

Quick and easy personalisation, print your graphics, insert in the pixquick poster holder and you're ready.



Crowd Control Barriers

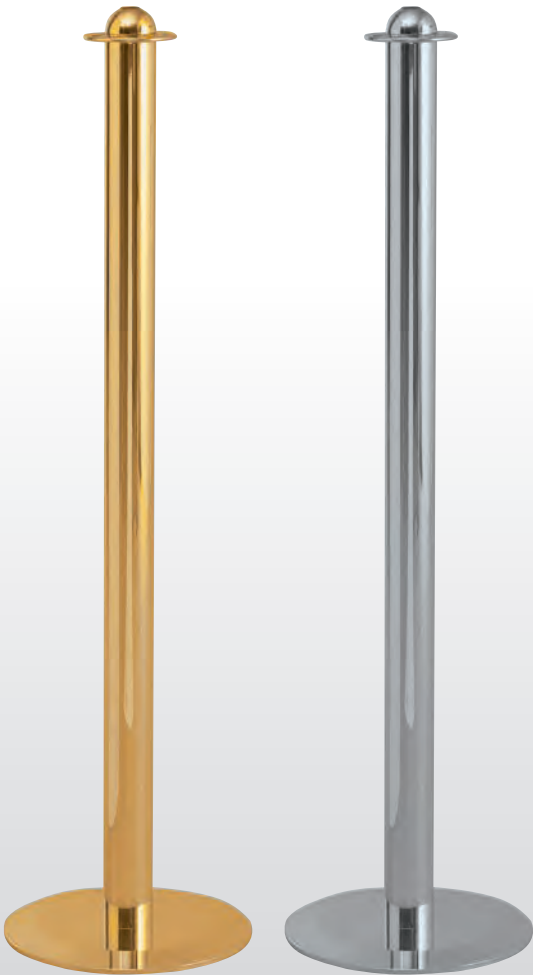
Stopper Tex

Stopper tex is the classic way of crowd control. High class material with high quality finish characterises stopper tex, especially for the elegant ambience in reception areas or hotel foyers as well as for exceptional exhibits in museums or showrooms. The sphere is composed of turned brass pieces with high gloss finish. Choose between Brass or Chrome-plated finish. The post has eight openings to hang the rope, shapely clips make the attaching easy and safe .The karabiner-like closing prevents any unintended opening or sliding out. Stopper tex is 940mm high and stands firmly on the base with 250mm diameter. You can choose between Red or Black cords made of polypropylene in different lengths.

Finish	Base	Post
Chrome	250 mm ø	940 mm
Brass	250 mm ø	940 mm

Finish	Cord Colour	Size
Chrome	Red	1500 mm
Brass	Red	1500 mm

Stopper tex Cord



Crowd Control Barriers

Black Eco Stopper

Stopper eco the queue management system developed and provided by Kunstdunger continues to have international success .The economic version in black comes with a steel base plate with black powder coated abs cover ,black powder coated post ,black housing and webbing the webbing extends to a maximum of 2.5mtrs. Deigned to be used everywhere there is a flux of people, airports ,stadiums ,cinemas ,banks and post offices.

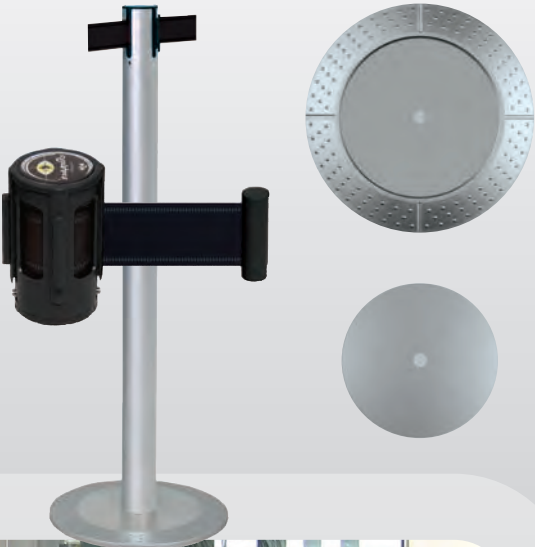
Black Eco Stopper
Price



Aluminium Master Stopper

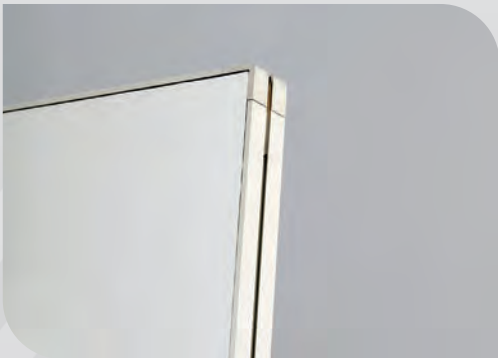
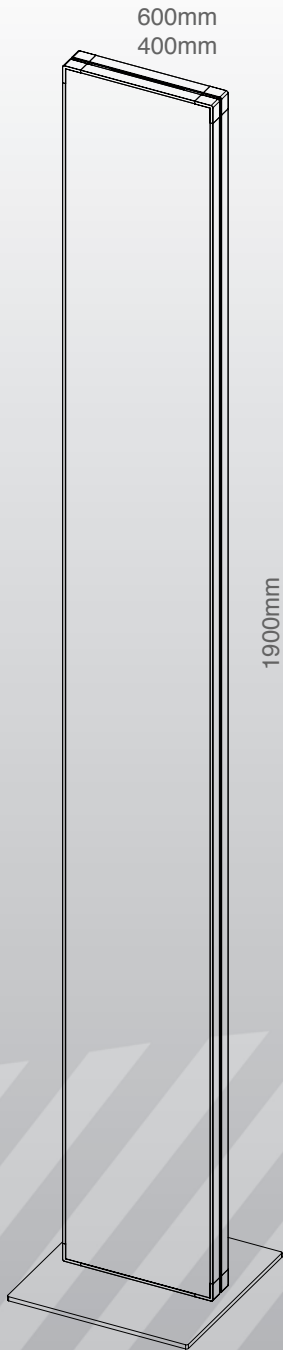
Elegant and High quality is the impression that the stopper gives with its silver anodized aluminium finish. Modular base with silver-plated abs-step-on-protection ring and silver anodized decorative inset. Thanks to the special finish the surface is very resistant to fingerprints. Housing and webbing in black. The webbing can be pulled out to max. Length of 3m.

Aluminium Master Stopper
Price



iPoint
Ipoint comes complete with two double sided aluminium composite panels :satin silver and matt white thus you can freely design front and rear side graphics for your ipoint . After customizing the panels they can be simply fixed with silicone or other glue to the profile frame ,optionally you can add brochure trays just ask and we will be glad to help. Available in two sizes 1900mm x 400mm and 1900mm x 600mm

Code	Size
IP1900400ARW	400 mm x 1900 mm
IP1900600ARW	600 mm x 1900 mm



- Fixings for wall signs
- Fixings for free standing signs
- Fixing for projecting signs
- Wire cable systems
- Poster hanging solutions
- Sign frames and stakes

- 58-62
- 63-73
- 74-76
- 77
- 78-79
- 80



Fixings For Wall Signs

Mix Alu

Elegant and economical aluminium screwsystem. Simple and easy to use just wall mount the fastener, screw the head through the sign into the fastener and tighten anti-clock wise.

The anti clock wise locking feature acts as a deterrent to people who try to remove sign. The Standoff fitting is made from aluminium and comes in a range of finishes, silver, gold, black and titan. The Standoff fitting comes in two sizes 13mm x 13mm and 13mm x 20mm.4 standoff fittings come neatly packaged with all necessary screw fittings and wall plugs so no unnecessary time wasting looking for screws to fit your standoff .

.13/20 = 20mm dept from wall with 13mm radius head, max panel thickness up to 12mm

.13/13 = 13mm dept from wall with 13mm radius head, max panel thickness up to 5 mm: Hole size required for fitting 8mm

FMX1313AL Mix Alu Alu

Set of 4

Per Piece

FMX1320AL Mix Alu Silver

Set of 4

Per Piece

FMX1320MSZ Mix Alu Black

Set of 4

Per Piece

FMX1320AL Mix Alu Gold

Set of 4

Per Piece

FMX1320AL Mix Alu Titan

Set of 4

Per Piece



MIDI

Fisso Midi is a classic among wall spacers. For the assembling of panels and signs of small and medium format sizes. Any sign with a maximum thickness of 11mm shows up perfectly at a distance of 21mm from the wall. Made of top quality brass and available in gold , chrome , and anodised silver. For internal and external applications.

Wall distance :21mm

Max Sign thickness: 11mm

Hole diameter: 8mm

F1521AR Midi Silver

Set of 4

Per Piece

F1521CM Midi Chrome

Set of 4

Per Piece

F1521GD Midi Gold

Set of 4

Per Piece



RAPID

This great looking revolutionary designed tamper proof interlocking system. This really is a clever design with its pre-assembled allen screw with just a few turns the head is spread in the spacer locking it safely in place. The fixing comes with elastic washers for a tighter safer fit to all sign panels. The fixing is made from die-cast plated metal.

Wall distance :23mm

Max Sign thickness: 2-12mm

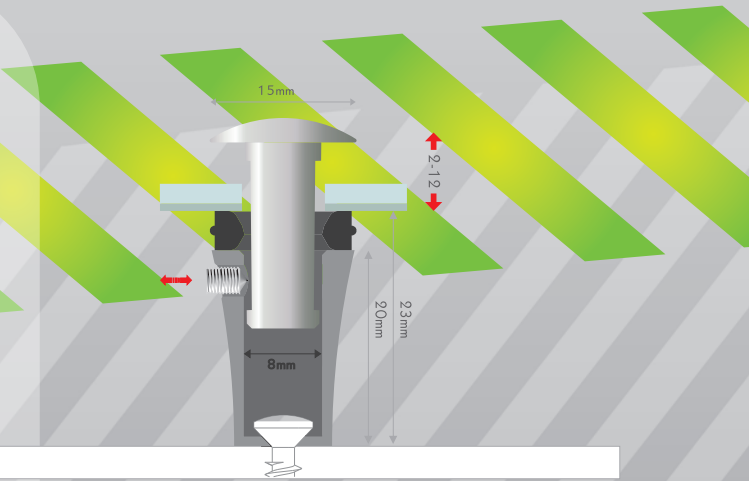
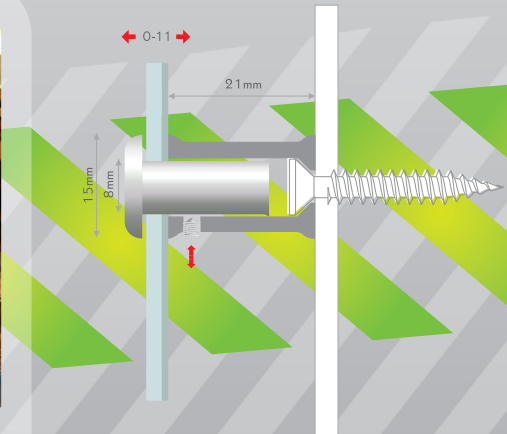
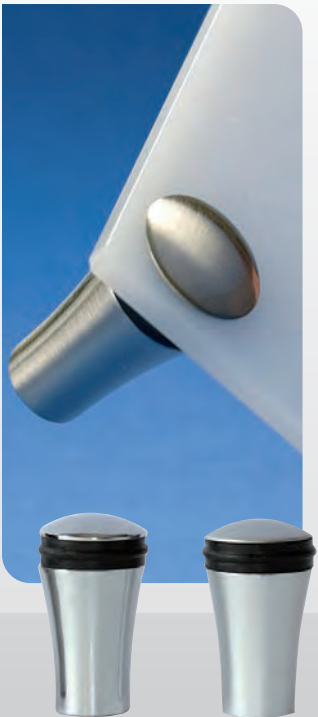
Hole diameter: 8mm



Pre assembled allen screw



Clever design ,head is spread with few turns in the spacer,fixing the panel safely

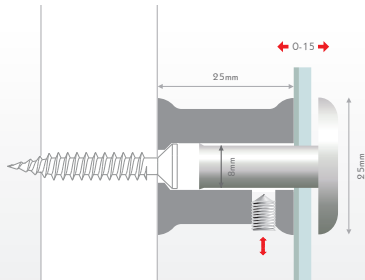


Fixings For Wall Signs

MAXI

The perfect solution for big size signs, the Fisso Maxi has just the right format for the fastening of signs up to 15mm thick with a distance of 25mm from the wall it's a real impressive standoff. Mount the fastener on the wall, put on the panel and plug the head through the panel into the fastener. Fix the head in the fastener with the allen screw. Available in Gold, Chrome and anodised silver.

Wall distance :25mm
Max Sign thickness: 0-15mm
Hole diameter: 8mm



FM2525CM Maxi Chrome

Set of 4

Per Piece

FM2525AR Maxi Silver

Set of 4

Per Piece

FM2525GD Maxi Gold

Set of 4

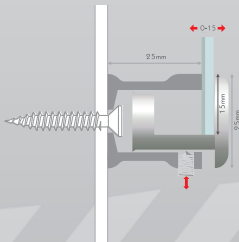
Per Piece



Border

Looking for something different ,dont want to drill holes in your sign, then try the KD Border it looks amazing on all materials

Wall distance: 25mm
Max Sign thickness: 0-15mm
Hole diameter: none required



FB2525CM Border Chrome

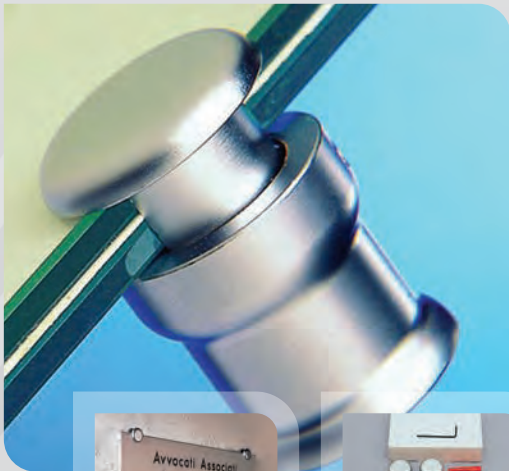
Set of 4

Per Piece

FB2525AR Border Silver

Set of 4

Per Piece



Fixtures & Fittings

Please Find Pricing On

Fixings For Wall Signs

Steel 15

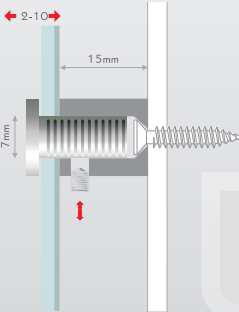
High-quality stainless steel, elegant facet appearance, plug-interlock system. Mount the fastener to the wall, put on the panel and plug the head through the panel into the fastener, fix the head in the fastener with the allen screw. For signs, panels and boards with small size.

Wall distance: 15mm
Head diameter: 15mm
Sign thickness: 2mm up to 11mm.

FS1515IX Steel 15

Set of 4

Per Piece



Steel 20

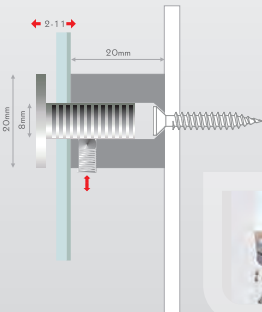
Stainless steel, plug-interlocksystem for middle sizes. Wallmount the fastener, fasten the panel with the head and allen screw in the fastener.

Wall distance: 20mm
Sign thickness: 2mm-15mm.

FS2020IX Steel 20

Set of 4

Per Piece



Steel 25

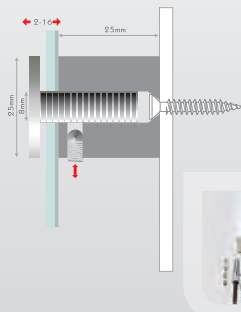
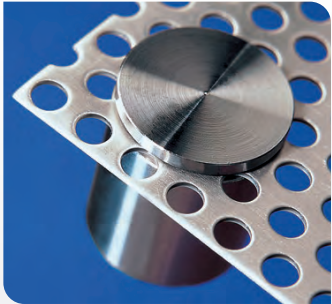
Stainless steel, plug-interlock system for big sizes. Wallmount the fastener, fasten the panel with the head and allen screw in the fastener.

Wall distance: 25mm
Head diameter: 25mm
Sign thickness: 2mm-16mm.

FS2525IX Steel 25

Set of 4

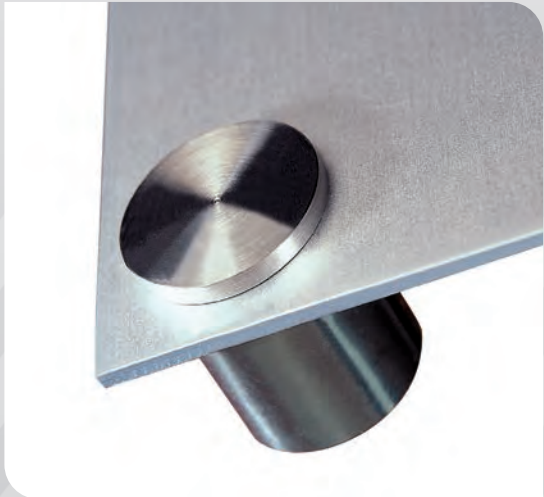
Per Piece



Fisso Steel

Fixing made of high grade stainless steel with a noble facet cut. A real eye catcher especially when used in conjunction with glass. Fisso steel is available in six different sizes so you will find one for every application

Number	Code	Name
1	FS1315IX	Steel 13/15, 4pcs
2	FS1320IX	Steel 13/20, 4pcs
3	FS1330IX	Steel 13/30, 4pcs
4	FS1515IX	Steel 15/15, 4pcs
5	FS2020IX	Steel 20/20, 4pcs
6	FS2525IX	Steel 25/25, 4pcs



Please Find Pricing On

Fixtures & Fittings

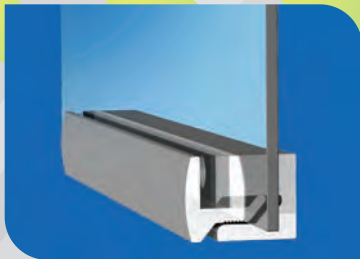
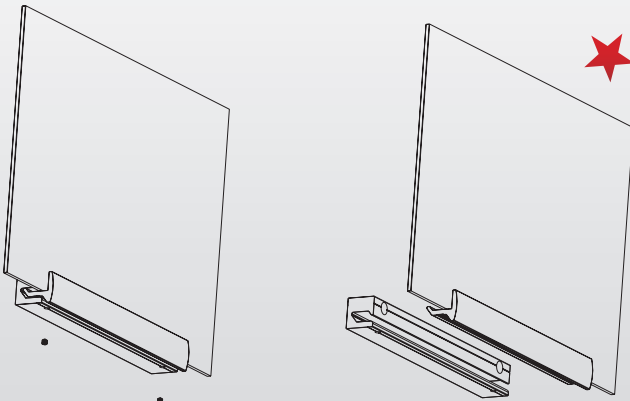
Fixings For Wall Signs

Clamper

Elegant clamp system without holes. Wall mount one profile, hook in the second and put on the panel and fix it with allen screws. Panels of different thickness are safely fastened without holes. You can use the clamper in different lengths, on one or two sides, as sandwich system or with single panels.

Wall Distance: 22mm
Sign thickness: 3-10mm

Code	length
FCL900	900 mm
FCL600	600 mm
FCL400	400 mm
FCL300	300 mm
FCL200	200 mm
FCL100	100 mm
FCL60	60 mm

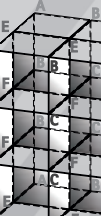
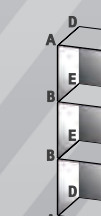
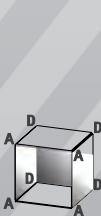
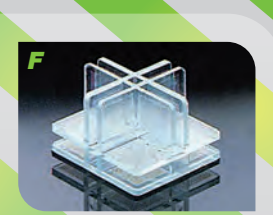
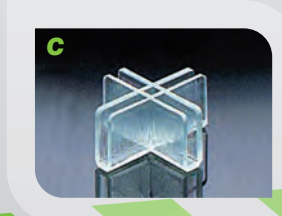


Fixings For Freestanding Signs

Connector

Shock resistant Panel connector made from glass green polycarbonate for modular cube systems. Create your own personal display cabinet with 5mm panels and connectors, the drawings on this page will help you choose the correct connectors. It's a great solution for designers and Sign Makers helping make great merchandising displays in shops and showrooms, museums, shop windows and exhibitions. Another great product from Sign and Digital.

Code	Type
FCONA	Connector A
FCONB	Connector B
FCONC	Connector C
FCOND	Connector D
FCONE	Connector E
FCONF	Connector F
FCONG	Connector G




Fixings For Freestanding Signs

KD IX Bond

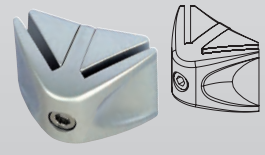
IX Bond connects 3mm – 10mm panels infinitely and free of torsion. The face joint remains at a discrete 6mm. The screw can be mounted from both sides convenient if you create structures in 3D or close to walls, ergonomic and decorative recessed grips make mounting easy. Order the required keys separately.

Code	Type
IX2B60AR	60°
IX2B90AR	90°
IX2B120AR	135°
IX2B180AR	180°
IX2BSWAR	Sandwich Connector

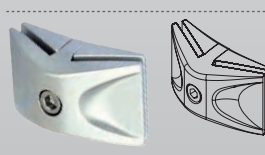





60° Connector:
silver-plated metal
die-cast, stainless steel
screw




90° Connector:
silver-plated metal
die-cast, stainless steel
screw



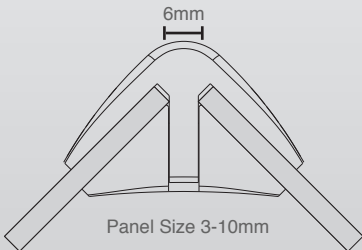
135° Connector:
silver-plated metal
die-cast, stainless steel
screw




180° Connector:
silver-plated metal
die-cast, stainless steel
screw




Lock: silver-plated
metal die-cast for locking
sandwich systems.




6mm
Panel Size 3-10mm




**60°
Connector**




**90°
Connector**




**135°
Connector**




**180°
Connector**




**60°
Connector**




**90°
Connector**



**135°
Connector**



**180°
Connector**



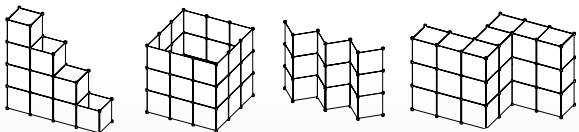
Fixings For Freestanding Signs

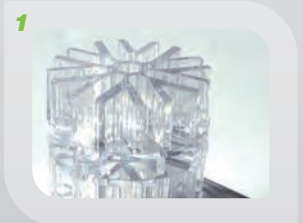
Digi plug

Innovative new product that is quick, light and easy to use , this is digiplug the 8-way connector for 4mm panels. Digiplug is recommended for small sized lightweight square panels as the connector is used in the corners not in the middle. Every digiplug comes with a thread on one side for mounting the accessories.



Code	Type
DPLU8TR	Transparent
DPLU5TR	1/2 Transparent
DPLUREG	Foot
DPLUAVEN	Suction Cup
DPLULMP	Spot Light
DPLUAS	Antislip Pad 0,8 mm Box of 20
DPLUFS	Full Set






1



2



3




4




5









6



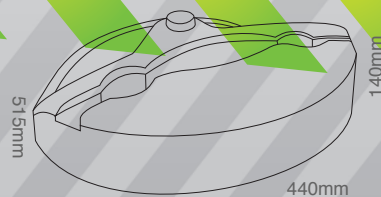
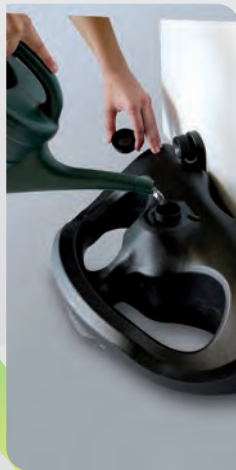




Fixings For Freestanding Signs

Panel Pod

We appreciate that companies need affordable , long lasting products , so Sign + Digital is constantly looking for cost effective Signage display Solutions. There is no other water base display system available that is constructed with such high quality materials and with such a high-end look. The Panel Pod water base system holds signs of different sizes generally constructed from corrugated or free foam PVC up to 10mm thick. The Panel Pod is an ideal way of getting your message across just about anywhere. When full weights about 13.61kg



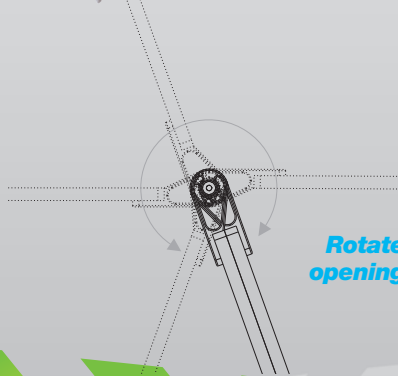
Fixings For Freestanding Signs

Signwalk

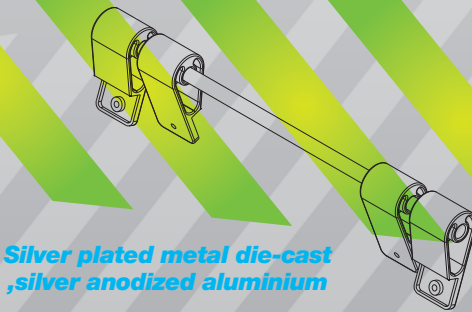
The Signwalk is an amazing solution which allows you to make your very own professional A-Frame signs .The Signwalk is a robust handle made from Silver plated metal die-cast and comes in an anodized aluminium finish .I rotates for simple opening and closing and the connector also becomes a convenient carrying handle. For transport and storage just fold the Signwalk with the image inside and it will be protected against scratches during transport and storage. Can be used on arrange of materials from Composite aluminium to Foam PVC . Will work with material from 2-10mm; why not use two hinges to make larger advertising signs?



Closed



Rotate for simple opening and closing



Silver plated metal die-cast ,silver anodized aluminium



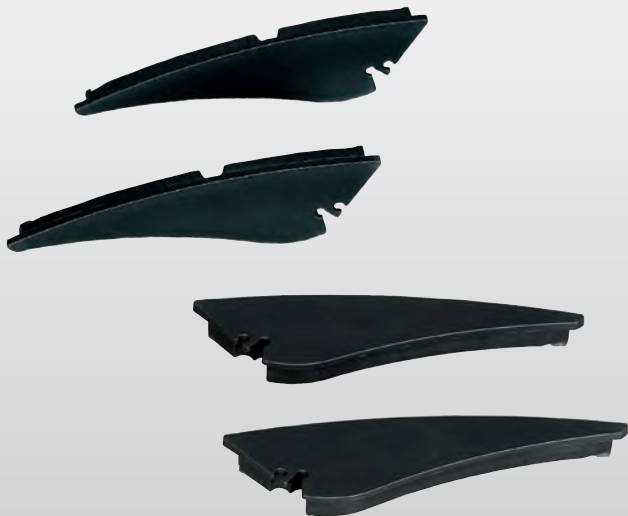
Great Ideas!

Fixings For Freestanding Signs

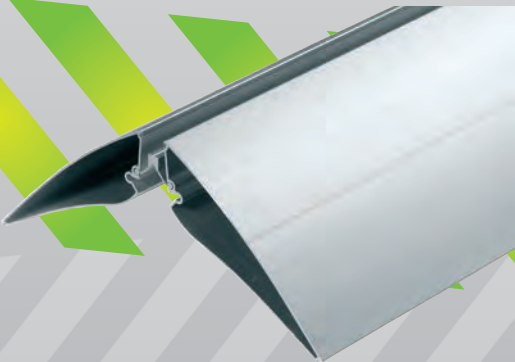
DIGIPRESTO

Pressto is really great: together with your panel pressto becomes a signpost, an advertising banner, a partition wall or a decorative element in interior and exterior areas. Combine the anodized aluminium profile with panels from 1mm up to 30mm. The special construction gives pressto maximum flexibility: materials are shut in safely by pressto. Opening and closing the profile easily with the knurled head screw, integrated rubber laces protect your panel and act as anti-slip pads as well. The most standard lengths come already mounted or by the meter in silver colour, black side caps can be ordered as an accessory. The 100mm and 200mm black powder coated lengths come already included and the black side caps.

Code	Description
PT235	Silver 235 mm
PT300	Silver 300 mm
PT400	Silver 400 mm
PT500	Silver 500 mm
PT100SZ	Black 100 mm with 4 Black End-Caps
PT200SZ	Black 200 mm with 4 Black End-Caps
PTAKSZ	4 Black End-Caps



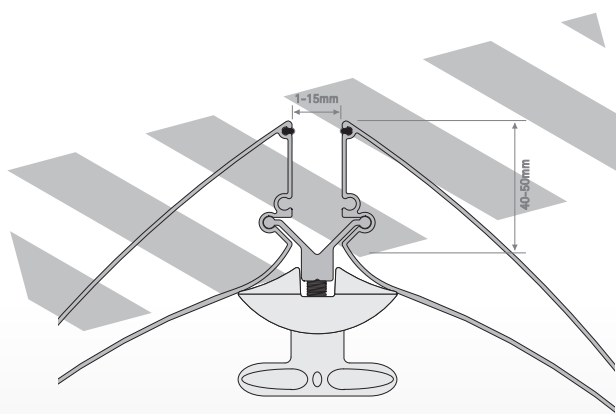
Optional lateral cover caps, available in black 4pcs



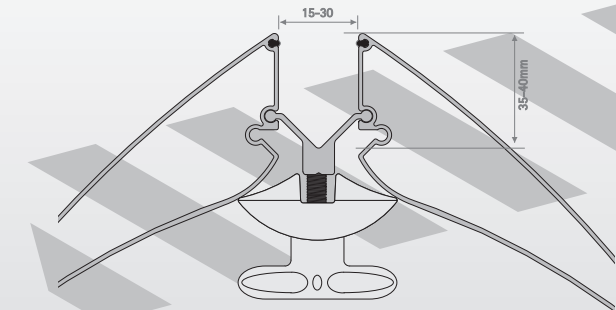
Clamping profile made from anodized aluminium with anti-slip protection and knurled head screw



Fixings For Freestanding Signs



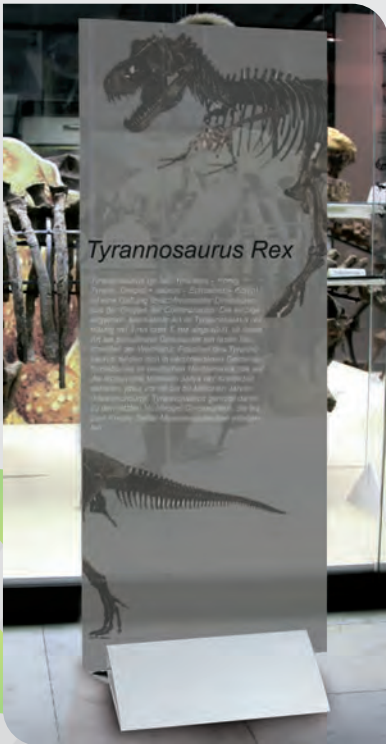
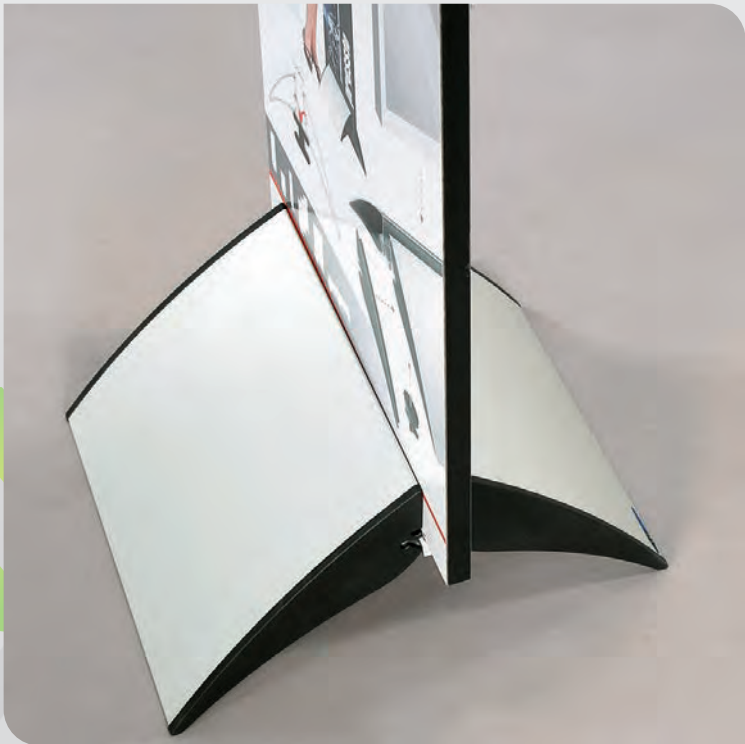
Digipresto 200mm black coated with black side caps



Maximum panel height and width depend on the materials used. Every application has to be approved individually if appropriate.



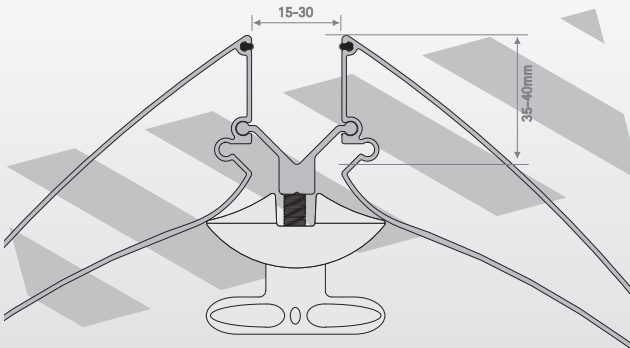
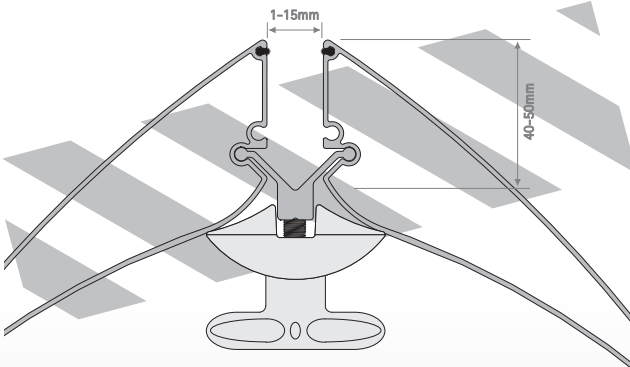
Digipresto 100mm black coated with black side caps



Fixings For Freestanding Signs

MyPressto
Beside all the great advantages of the digipressto system, MYPRESSTO can be customized to match your customers branding or event or corporate colours. Simply insert the matching print with or without the plastic cover that is provided. Think different and give your customer something different, not only images or logos can be added you can add colourful designs or copy the floor and wall decorations to provide a really special effect. Elegant black side caps complete the overall look. A really great product.

Code	Description
MYPTA4	A4
MYPT400	210 mm x 400 mm
MYPT500	210 mm x 500 mm
IX2BSWAR	IX Bond Sandwich Connector



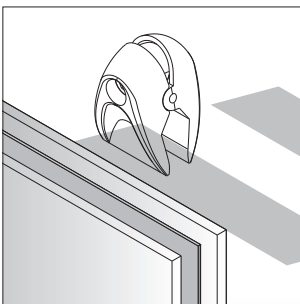
Silver anodized aluminium with black caps and a transparent cover.



Fixtures & Fittings

Please Find Pricing On

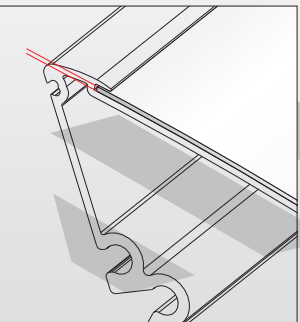
Fixings For Freestanding Signs



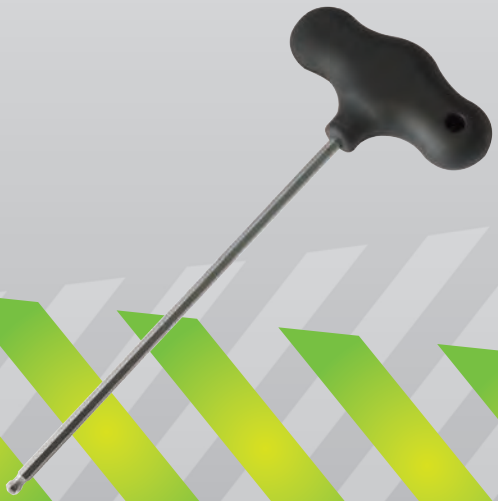
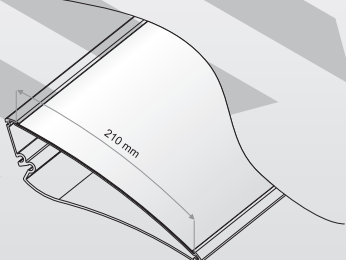
Design your image, print it and install it, simple.



Silver plated IXBOND metal die cast locking sandwich system for holding two panels firmly together.



With cover (1mm) you can use max 1mm thick material.



Please Find Pricing On

Fixtures & Fittings

Fixings For Freestanding Signs

Spider Feet Stand up sign holder

- Great economy solution
- Black powder coated steel
- Stylish hi tech design
- Ideal for standing up media single or double sided
- Easy to use and reuse
- POP Display
- Great for exhibitions.

Code	Description
SF1025B	Black 1/4" Stand-Up
SF1050B	Black 1/2" Stand-Up
SFJ1050B	Black 1/2" Jumbo Stand-Up
SFJ1000B	Black Jumbo Adjustable Stand-Up



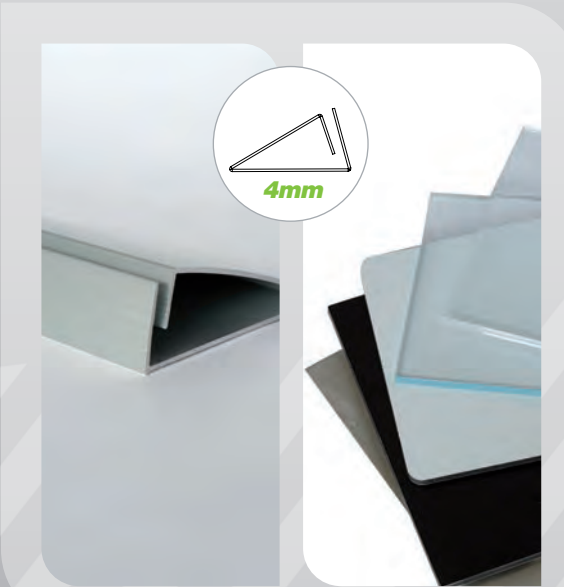
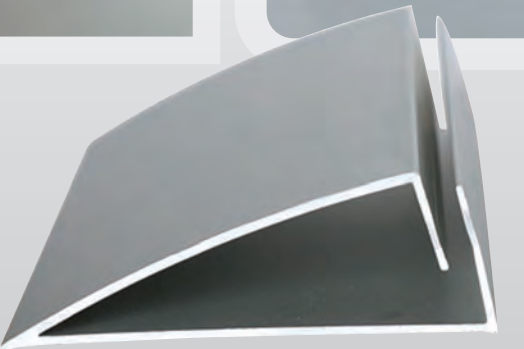
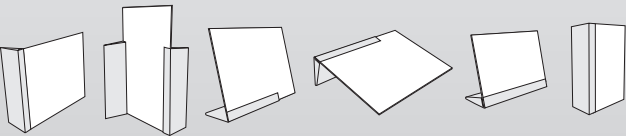
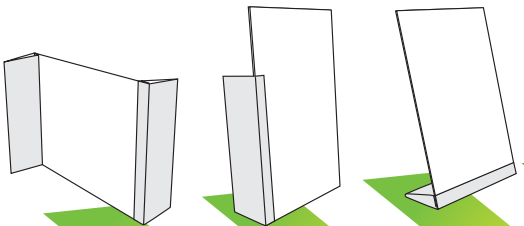
Great Ideas!



Fixings For Freestanding Signs

Snapin

Snapin is a silver anodized aluminium extrusion for 4mm thick panels. You can use it together with any 4mm substrate ,acrylic poster pocket or become creative and use printed aluminium composite panels or glass or even mdf .The field of possible applications is huge ,use it as a name plate for desk signs ,as a price sheet or product tag, use it to hold menu's in a restaurant of café , use it as a photo frame holder, with snapin you will always have a solution.



Code	Size
SNIA7	A7, 74 mm
SNIA6	A6, 105 mm
SNIA5	A5, 148 mm
SNIA4	A4, 210 mm
SNIA3	A3, 297 mm
SNIA500	500 mm

Snapin teams perfectly with 4mm thick panels made from various materials.

Projecting Signs

Steel Projecting Signs Deluxe Scroll Brackets

Twisted steel shaft solid steel ball finial, mounts to post or wall comes with a 3" back plate with four mounting holes. Available only in black powder coated finish. Comes with 2mm aluminium sign blank.

Panel Size: Height 14" X Width 34"
914 mm



Steel Projecting Signs Reverse Scroll Brackets

Twisted steel shaft and classic scroll comes with aluminium oval blank and heavy duty 3" back plate with four mounting holes, black powder coated finish.

Panel Size: Height 22" X Width 33"
1092 mm



Parisian Arch

This swinging sign hanger projects the sign panel above and out from the mounting point, which is a great benefit in situations where the fixing point may be limited to a low fascia or adjoining brick work. The mounting plate also requires a relatively small fixing area.

- Standard sign panel with fixings included.
- Each sign hanger comes fully zinc plated and powder coated giving a durable gloss black finish.
- The sign panels are moulded from high quality UV stable rigid plastic, and will directly accept vinyl and most paints.
- All fixings supplied are stainless steel and all mounting holes are pre-drilled at 8.5mm diameter.

Parisian Arch
340 mm x 555 mm Landscape



Floral Classic

This tidy design is both suitable for interior and exterior use, with a fixed sign panel firmly mounting on three points. It also has the benefit of supporting a hanging basket, which can add a whole new dimension to displaying a sign.

- Standard sign panel with fixings included.
- Each sign hanger comes fully zinc plated and powder coated giving a durable gloss black finish.
- The sign panels are moulded from high quality UV stable rigid plastic, and will directly accept vinyl and most paints.
- All fixings supplied are stainless steel and all mounting holes are pre-drilled at 8.5mm diameter.

Floral Classic
340 mm x 550 mm Landscape



Curvex Portrait/Landscape

The sleek and clean design of this projecting bracket offers a more contemporary look.

- This projecting sign can be both wall and ceiling mounted
- Supplied as a complete unit powder coated silver as standard
- Strong box section mounting bracket, zinc plated prior to powder coating
- The curved panels are preformed aluminium and simply bolt on with stainless steel fixing (supplied)
- Vinyl can be directly applied to the panels
- Silver powder coat can easily be over painted if other colours are required

Curvex
400 mm x 700 mm Landscape
400 mm x 700 mm Portrait



Fixtures & Fittings

Page 74

Please Find Pricing On

Page 126 Of Creative Guide

Illuminated Projecting Signs

Circular Illuminated Projecting Signs

Circular light boxes and menu displays cases provide venues with an unusual method of advertising products and services. Their unusual shape ensures that they stand out in a square world. They provide an elegant and stylish means of promoting a company. The light boxes are made of high quality welded aluminium construction and are powder coated to an exceptional finish. Circular light boxes make a refreshing change from the standard square light boxes and allow more scope for creative graphic design.

Illuminated Circular Projecting Sign
720 mm dia White

720 mm dia Silver

Illuminated Menu Case
610 mm x 915 mm Landscape
610 mm x 915 mm Portrait



Please Find Pricing On

Page 127 Of Creative Guide

Fixtures & Fittings

Page 75

Aluminium Projecting Signs

- Cost effective double-sided shop front advertising
- Non-illuminated aluminium sign in 2mm polyester powder coated aluminium sheet
- 50mm fixing flange with key holes
- For application of vinyl lettering or printed stickers



Round Projector Display area
495mm diameter
€28.35 / £24.09



Oval Projector Display area
400 x 500mm
€28.35 / £24.09



Rectangular Projector Display area
417 x 575mm
€28.35 / £24.09

Wire Cable Systems

kit for fixing between floor and ceiling For 1.5mm Diameter Cable

- Comprises:
- 19mm dia. top boss
 - 4mtr x 1.5mm dia. stainless steel cable
 - 19mm dia. adjusting sleeve
 - Floor anchor
 - Tension spring (allen key and fixing screws supplied)

Kit for Fixing Floor & Ceiling		
6000 SA	€12.50	£10.62



Ceiling, floor and wall mounted kit For 1.5mm Diameter Cable

- Comprises:
- 40mm dia. 3 point fixing rose with swivel top boss
 - 40mm dia. 3 point fixing rose with lower swivel fixing & tensioner
 - 4m x 1.5mm dia. stainless steel cable
 - Tension spring (Allen key and fixing screws supplied)

Ceiling, Floor or Wall Mounted Kit		
6005 SA	€15.50	£13.17



Hanging kit for 6mm panel For 1.5mm Diameter Cable

- Comprises:
- 2m x 1.5mm dia. stainless steel cable
 - 19mm dia. hanging support for 6mm panel
 - Adjusting sleeve
 - Ceiling anchor (allen key and fixing screws supplied)

Kit for Fixing Between Floor & Ceiling		
6004 SA	€7.30	£6.20



Poster Hangers

Poster Snap

- Lightweight display solution for paper posters
- Sold in pairs, snap onto the top and bottom of poster
- Stylish silver anodised finish
- Can be wall mounted or suspended for window display
- Stock Sizes (portrait) A3, A2, A1, A0

Poster Snap Set

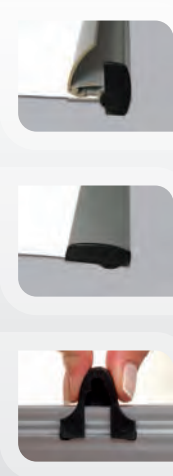
500 mm
700 mm
1000 mm

Poster Clamp

- A robust poster display solution for heavier or large posters
- Sold in pairs, extrusion clamps to top and bottom of poster
- Can be wall mounted or suspended
- ideal for window displays
- Stock sizes (portrait) 500mm, 700mm, 1000mm

Poster Clamp Set

297 mm
420 mm
594 mm
841 mm

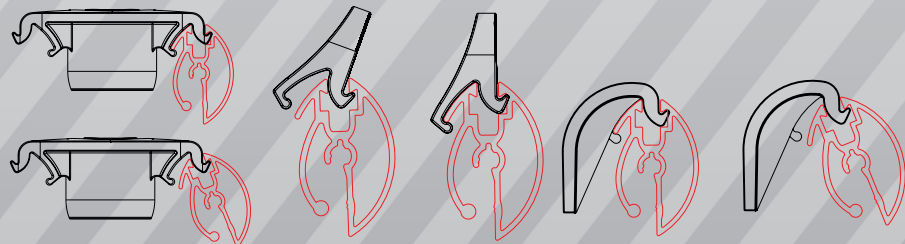


Banner Block

The perfect profile to display your digital prints. This silver anodized aluminium extrusion helps clamp the full length of your digital print giving it a high quality feel and finish. The plastic eyelets included for suspension from ceiling can be simply clipped on. The banner block is available in common size lengths as a 2 piece set with eyelets and convenient profile opener. Available up to 2000mm in length.

Bannerblock

500 mm
700 mm
1000 mm
1200 mm
1500 mm
2000 mm



Fixtures & Fittings

Please Find Pricing On

The easy and inexpensive way to hang posters



For Hanging Corrugated Plastic Substrates

Simply press the spike end into the edge of the coro material so that it penetrates across the corrugated flutes, then hang it up.



Part #PH100 (100 Pack)



A Simple And Safe Way To Hang Foam Boards

Use with Foam or Gator board. Just twist the hook into the side of your foamboard substrate while pressing it into the foamboard. Once in place just hang it up.



Part #TH100 (100 Pack)

Works great with fishing line, string, chain or drop ceiling hooks and hanging hooks.

Please Find Pricing On

Fixtures & Fittings

Solutions For Corrugated Plastic

NEW PRODUCT

Sign Frames & Sign Stakes at Great Low Prices!

Hi Quality and environmentally-responsible sign frames and sign stakes at competitive prices. All of the sign frames and sign stakes are engineered to be sturdy, durable, and light weight. Each sign frame design offers integrated features that a welded metal version simply cant match. Design and made by Sign makers this is a great solution for holding all your corrugated plastic signs. Designed for outdoor use no need anymore to hammer your corrugated signs into a wood spike, these sign frames and stakes will help you win more customers and get you more money for your corrugated signs, whats more they can be used over and over again. Great for garden centre signs, parks, outdoor events, golf sponsorship you name sign frames and sign stakes work great every time.

Spider step stake

- Accepts 4mm corrugated plastic sign
- Replacement for wood stake and nail
- Penetrates hard ground with ease
- Stronger then wire doesn't easily bend
- Greta for weekend event advertising
- Gold sponsorship
- Warning signs
- Sale signs



Real Estate Step Frame

- 18 x 24" sign panel
- Accepts aluminium or corrugated plastic
- No fasteners required just slide sign into place
- Lightweight but strong and durable
- Doesn't rust
- Great for temporary signs
- Golf sponsorship signs
- Any sign you need to free stand in grassy area



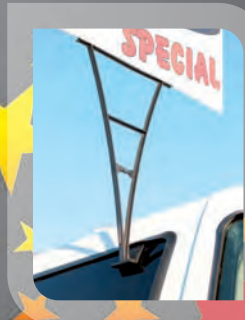
Goal post frame

- Accepts 4mm corrugated plastic sign
- The perfect solution if you really want to die cut the sign
- No fasteners required



Vehicle window clip

- Accepts 4mm corrugated plastic sign
- Designed to slide onto most vehicle windows
- Great for car dealers and real estate agents, and boot sales.



Spider Rider

A clip on rider for your plastic step frames it easily attaches to the top or slides to allow a variety of messages and shapes

Pop display stand

- Great for making shelf talkers and table talkers
- Accepts 4mm corrugated plastic
- Low cost promotional piece.



Ideas Book

